



Title Plan - LT 483316

Survey Number LT 483316
Surveyor Reference 33302 - P3 S2B
Surveyor Amanda Anne Crawford
Survey Firm Wood & Partners Consultants Ltd
Surveyor Declaration

Survey Details

Dataset Description Lots 1 - 34, 814, 817, 900, 901 & 1000 Being a Subdivision of Lot 1000 DP 474345
Status Initiated
Land District North Auckland
Submitted Date
Survey Class Class A
Survey Approval Date
Deposit Date

Territorial Authorities

Auckland

Comprised In

CT 660978

Created Parcels

Parcels	Parcel Intent	Area	CT Reference
Lot 1 Deposited Plan 483316	Fee Simple Title	0.0701 Ha	681604
Lot 2 Deposited Plan 483316	Fee Simple Title	0.0648 Ha	681605
Lot 3 Deposited Plan 483316	Fee Simple Title	0.0654 Ha	681606
Lot 4 Deposited Plan 483316	Fee Simple Title	0.0709 Ha	681607
Lot 5 Deposited Plan 483316	Fee Simple Title	0.0659 Ha	681608
Lot 6 Deposited Plan 483316	Fee Simple Title	0.0660 Ha	681609
Lot 7 Deposited Plan 483316	Fee Simple Title	0.0676 Ha	681610
Lot 8 Deposited Plan 483316	Fee Simple Title	0.0676 Ha	681611
Lot 9 Deposited Plan 483316	Fee Simple Title	0.0676 Ha	681612
Lot 10 Deposited Plan 483316	Fee Simple Title	0.0676 Ha	681613
Lot 11 Deposited Plan 483316	Fee Simple Title	0.0676 Ha	681614
Lot 12 Deposited Plan 483316	Fee Simple Title	0.0686 Ha	681615
Lot 13 Deposited Plan 483316	Fee Simple Title	0.0690 Ha	681616
Lot 14 Deposited Plan 483316	Fee Simple Title	0.0654 Ha	681617
Lot 15 Deposited Plan 483316	Fee Simple Title	0.0654 Ha	681618
Lot 16 Deposited Plan 483316	Fee Simple Title	0.0655 Ha	681619
Lot 17 Deposited Plan 483316	Fee Simple Title	0.0667 Ha	681620
Lot 18 Deposited Plan 483316	Fee Simple Title	0.0711 Ha	681621
Lot 19 Deposited Plan 483316	Fee Simple Title	0.0782 Ha	681622
Lot 20 Deposited Plan 483316	Fee Simple Title	0.0672 Ha	681623
Lot 21 Deposited Plan 483316	Fee Simple Title	0.0839 Ha	681624
Lot 22 Deposited Plan 483316	Fee Simple Title	0.0728 Ha	681625
Lot 23 Deposited Plan 483316	Fee Simple Title	0.0651 Ha	681626
Lot 24 Deposited Plan 483316	Fee Simple Title	0.0700 Ha	681627

Title Plan - LT 483316

Created Parcels

Parcels	Parcel Intent	Area	CT Reference
Lot 26 Deposited Plan 483316	Fee Simple Title	0.0683 Ha	681628
Lot 27 Deposited Plan 483316	Fee Simple Title	0.0675 Ha	681629
Lot 28 Deposited Plan 483316	Fee Simple Title	0.0683 Ha	681630
Lot 29 Deposited Plan 483316	Fee Simple Title	0.0656 Ha	681631
Lot 30 Deposited Plan 483316	Fee Simple Title	0.0587 Ha	681632
Lot 31 Deposited Plan 483316	Fee Simple Title	0.0567 Ha	681633
Lot 32 Deposited Plan 483316	Fee Simple Title	0.0560 Ha	681634
Lot 33 Deposited Plan 483316	Fee Simple Title	0.0541 Ha	681635
Lot 34 Deposited Plan 483316	Fee Simple Title	0.0650 Ha	681636
Lot 814 Deposited Plan 483316	Vesting on Deposit for Recreation Reserve (Territorial Authority)	0.0670 Ha	681637
Lot 817 Deposited Plan 483316	Vesting on Deposit for Recreation Reserve (Territorial Authority)	0.3368 Ha	681638
Lot 900 Deposited Plan 483316	Vesting on Deposit for Road	0.3960 Ha	
Lot 901 Deposited Plan 483316	Vesting on Deposit for Road	0.3321 Ha	
Area A Deposited Plan 483316	Land Covenant		
Area B Deposited Plan 483316	Land Covenant		
Area C Deposited Plan 483316	Land Covenant		
Area D Deposited Plan 483316	Land Covenant		
Area E Deposited Plan 483316	Land Covenant		
Area F Deposited Plan 483316	Land Covenant		
Area G Deposited Plan 483316	Land Covenant		
Area H Deposited Plan 483316	Land Covenant		
Area I Deposited Plan 483316	Land Covenant		
Area J Deposited Plan 483316	Easement		
Area K Deposited Plan 483316	Easement		
Area L Deposited Plan 483316	Easement		
Area M Deposited Plan 483316	Easement		
Area N Deposited Plan 483316	Easement		
Area O Deposited Plan 483316	Easement		
Area P Deposited Plan 483316	Easement		
Area Q Deposited Plan 483316	Easement		
Area R Deposited Plan 483316	Easement		
Area S Deposited Plan 483316	Easement		
Area T Deposited Plan 483316	Easement		
Area U Deposited Plan 483316	Easement		
Area V Deposited Plan 483316	Easement		
Area W Deposited Plan 483316	Easement		
Area X Deposited Plan 483316	Easement		
Area Y Deposited Plan 483316	Easement		

Title Plan - LT 483316

Created Parcels

Parcels	Parcel Intent	Area	CT Reference
Area AA Deposited Plan 483316	Easement		
Area AB Deposited Plan 483316	Easement		
Area AD Deposited Plan 483316	Easement		
Area AE Deposited Plan 483316	Easement		
Area AF Deposited Plan 483316	Easement		
Area AG Deposited Plan 483316	Easement		
Area AH Deposited Plan 483316	Easement		
Area AI Deposited Plan 483316	Easement		
Area AJ Deposited Plan 483316	Easement		
Area AK Deposited Plan 483316	Easement		
Area AL Deposited Plan 483316	Easement		
Area AM Deposited Plan 483316	Easement		
Area AN Deposited Plan 483316	Easement		
Area AO Deposited Plan 483316	Easement		
Area AP Deposited Plan 483316	Easement		
Area AQ Deposited Plan 483316	Easement		
Area AR Deposited Plan 483316	Easement		
Area AS Deposited Plan 483316	Easement		
Area AT Deposited Plan 483316	Easement		
Area AU Deposited Plan 483316	Land Covenant		
Area AV Deposited Plan 483316	Land Covenant		
Area AW Deposited Plan 483316	Land Covenant		
Area AX Deposited Plan 483316	Land Covenant		
Area AY Deposited Plan 483316	Land Covenant		
Area AZ Deposited Plan 483316	Land Covenant		
Area BA Deposited Plan 483316	Land Covenant		
Area BB Deposited Plan 483316	Land Covenant		
Area BC Deposited Plan 483316	Land Covenant		
Area BD Deposited Plan 483316	Land Covenant		
Area BE Deposited Plan 483316	Land Covenant		
Area BF Deposited Plan 483316	Land Covenant		
Lot 1000 Deposited Plan 483316	Fee Simple Title	8.4428 Ha	681639
Area AC Deposited Plan 483316	Easement		
Total Area		<hr/> 11.7849 Ha	

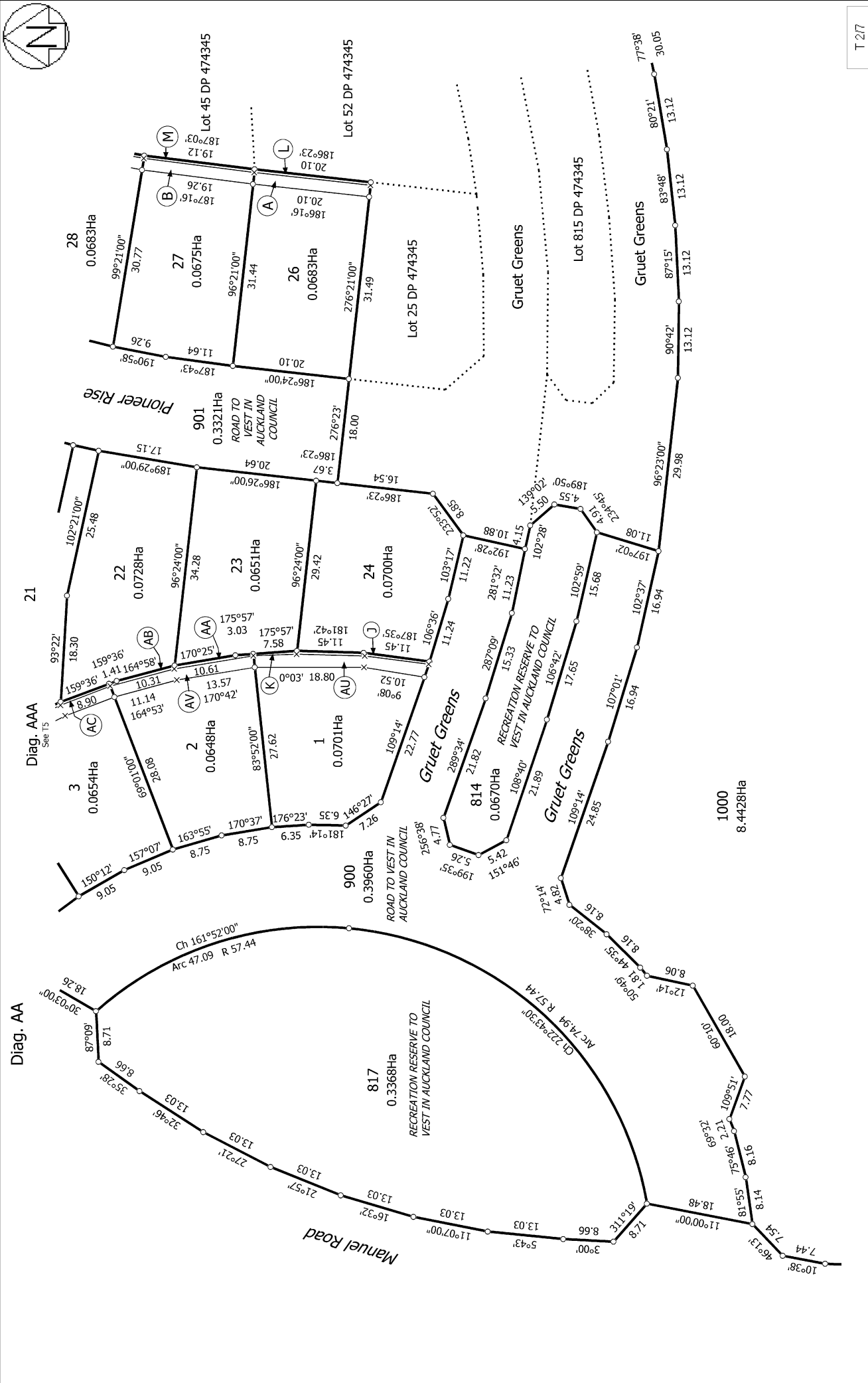
LOTS 1 -34, 814, 817, 900, 901 & 100 BEING A SUBDIVISION OF LOT 1000 DP 474345	
LAND REGISTRATION DISTRICT	NORTH AUCKLAND
PLAN NUMBER	DP 483316
TERRITORIAL AUTHORITY	AUCKLAND COUNCIL
TERRITORIAL AUTHORITY REF	R55315
DATE	JANUARY 2014
OUR REF	33302 – P3 STAGE 2B

EXISTING EASEMENTS TO BE RETAINED					
PURPOSE	PREVIOUSLY SHOWN AS	NOW SHOWN AS	SERVIENT TENEMENT	DOMINANT TENEMENT	CREATED BY
RIGHT TO MAINTAIN GARDEN	AREA L DP474345	AREA L HEREON	LOT 26 HEREON	LOT 52 DP 474345 (CT 660976)	EI 9910784.7
	AREA M DP474345	AREA M HEREON	LOT 27 HEREON	LOT 45 DP 474345 (CT 660969)	EI 9910784.7
	AREA N DP474345	AREA N HEREON	LOT 28 HEREON		EI 9910784.7
	AREA O DP474345	AREA O HEREON	LOT 28 HEREON	LOT 44 DP 474345 (CT 660968)	EI 9910784.7
	AREA P DP474345	AREA P HEREON	LOT 29 HEREON		EI 9910784.7
	AREA Q DP474345	AREA Q HEREON	LOT 29 HEREON	LOT 40 DP 474345 (CT 660964)	EI 9910784.7
	AREA R DP474345	AREA R HEREON	LOT 30 HEREON		EI 9910784.7
	AREA S DP474345	AREA S HEREON	LOT 31 HEREON		EI 9910784.7
	AREA T DP474345	AREA T HEREON	LOT 31 HEREON	LOT 39 DP 474345 (CT 660963)	EI 9910784.7
	AREA U DP474345	AREA U HEREON	LOT 32 HEREON		EI 9910784.7
	AREA V DP474345	AREA V HEREON	LOT 32 HEREON	LOT 38 DP 474345 (CT 660962)	EI 9910784.7
	AREA W DP474345	AREA W HEREON	LOT 33 HEREON		EI 9910784.7
	AREA X DP474345	AREA X HEREON	LOT 33 HEREON	LOT 35 DP 474345 (CT 660959)	EI 9910784.7
	AREA Y DP474345	AREA Y HEREON	LOT 34 HEREON		EI 9910784.7

PROPOSED EASEMENTS			
PURPOSE	SHOWN AS	SERVIENT TENEMENT	DOMINANT TENEMENT
RIGHT TO MAINTAIN GARDEN	AREA J	LOT 1 HEREON	LOT 24 HEREON
	AREA K	LOT 1 HEREON	LOT 23 HEREON
	AREA AA	LOT 2 HEREON	LOT 23 HEREON
	AREA AB	LOT 2 HEREON	LOT 22 HEREON
	AREA AC	LOT 3 HEREON	LOT 22 HEREON
	AREA AD	LOT 3 HEREON	LOT 21 HEREON
	AREA AE	LOT 4 HEREON	LOT 21 HEREON
	AREA AF	LOT 5 HEREON	LOT 21 HEREON
	AREA AG	LOT 6 HEREON	LOT 21 HEREON
	AREA AH	LOT 6 HEREON	LOT 19 HEREON
	AREA AI	LOT 7 HEREON	LOT 19 HEREON
	AREA AJ	LOT 7 HEREON	LOT 18 HEREON
	AREA AK	LOT 8 HEREON	LOT 18 HEREON
	AREA AL	LOT 8 HEREON	LOT 17 HEREON
	AREA AM	LOT 9 HEREON	LOT 17 HEREON
	AREA AN	LOT 9 HEREON	LOT 16 HEREON
	AREA AO	LOT 10 HEREON	LOT 16 HEREON
	AREA AP	LOT 10 HEREON	LOT 15 HEREON
	AREA AQ	LOT 11 HEREON	LOT 15 HEREON
	AREA AR	LOT 11 HEREON	LOT 14 HEREON
AREA AS	LOT 12 HEREON	LOT 14 HEREON	
AREA AT	LOT 12 HEREON	LOT 13 HEREON	

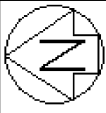
LAND COVENANTS

AREA SHOWN AS AREA A, B, C, D, E, F, G, H, I, AU, AV, AW, AX, AY, AZ, BA, BB, BC, BD, BE & BF HEREON ARE TO BE SUBJECT TO LAND COVENANTS.

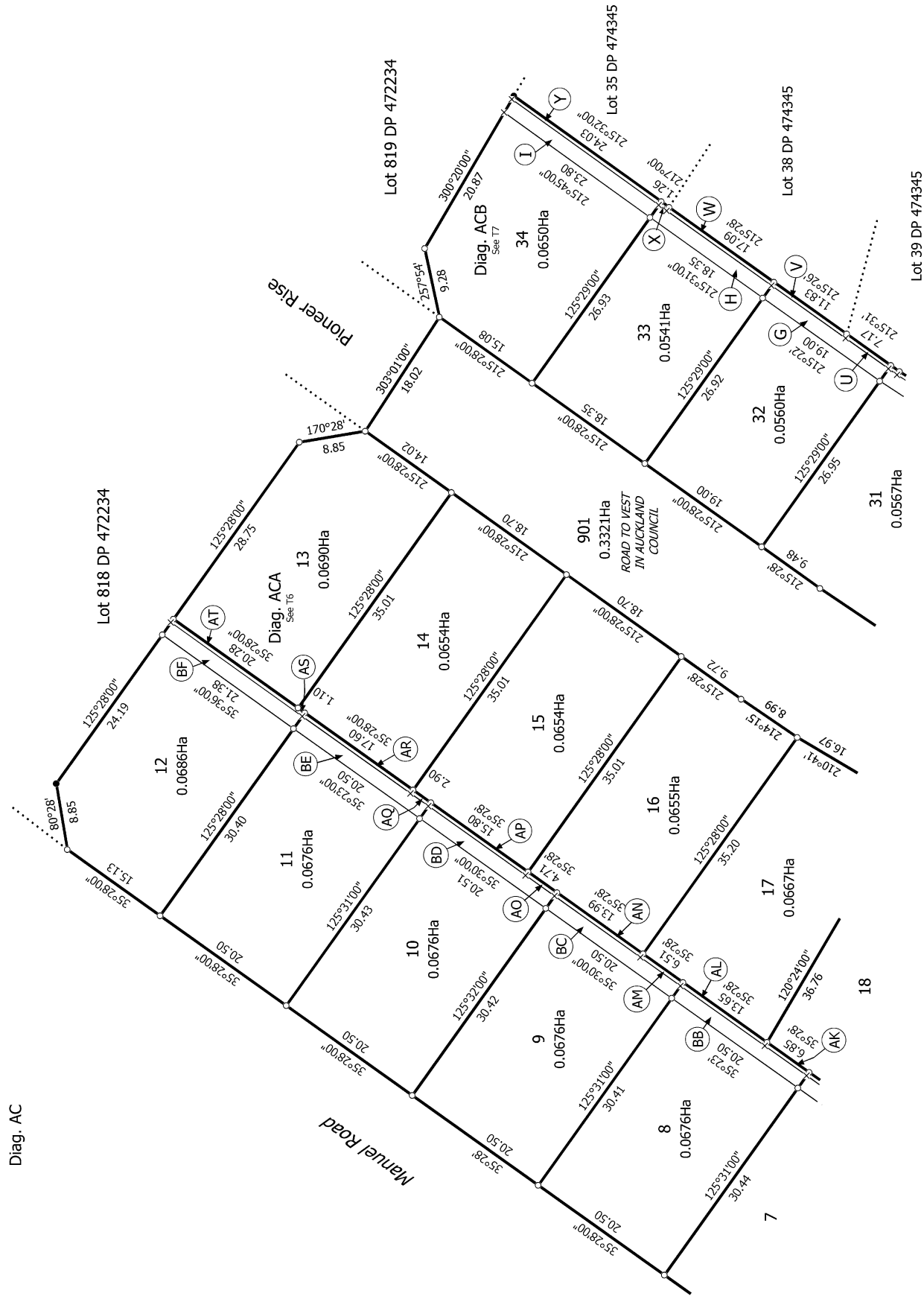


T 217

<p>Land District: North Auckland</p> <p>Digitally Generated Plan</p> <p>Generated on: 06/01/2015 4:55pm Page 7 of 12</p>	<p>Lots 1 - 34, 814, 817, 900, 901 & 1000 Being a Subdivision of Lot 1000 DP 474345</p>	<p>Surveyor: Amanda Anne Crawford</p> <p>Firm: Wood & Partners Consultants Ltd</p>	<p>Title Plan</p> <p>LT 483316</p> <p>DRAFT</p>
---	--	--	--



Diag. AC



Lot 818 DP 472234

Lot 819 DP 472234

Lot 35 DP 474345

Lot 38 DP 474345

Lot 39 DP 474345

T 4/7

Land District: North Auckland

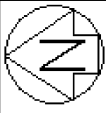
Digitally Generated Plan

Generated on: 06/01/2015 4:55pm Page 9 of 12

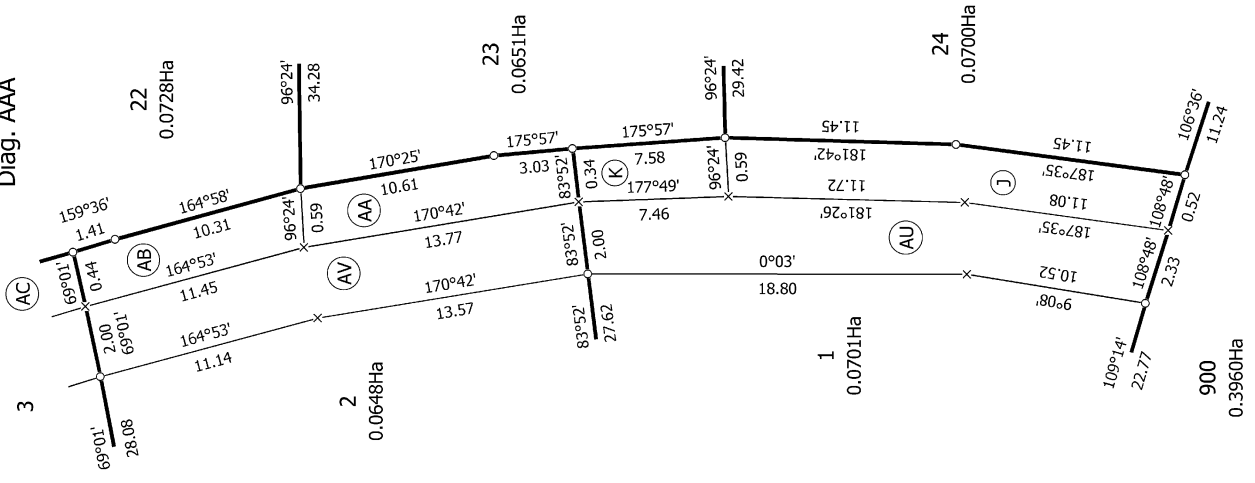
Lots 1 - 34, 814, 817, 900, 901 & 1000 Being a Subdivision of Lot 1000 DP 474345

Surveyor: Amanda Anne Crawford
Firm: Wood & Partners Consultants Ltd

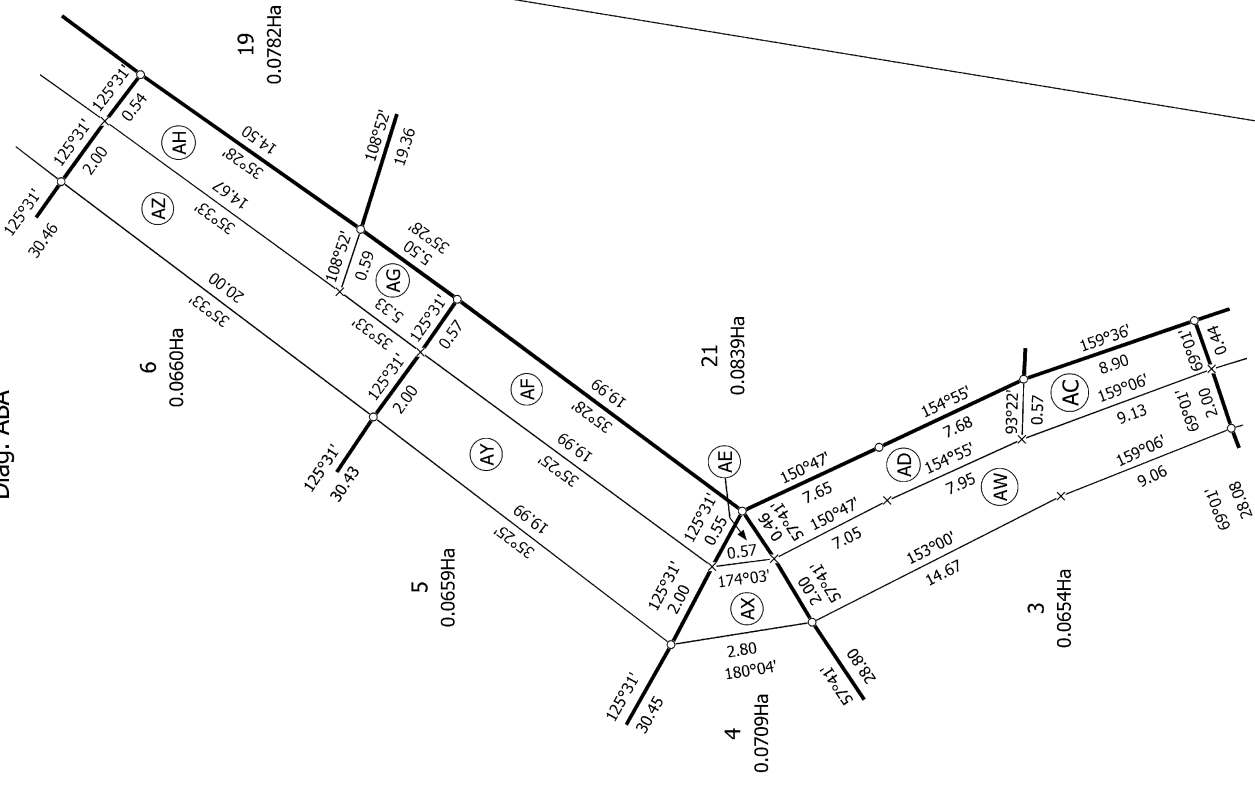
Title Plan
LT 483316
DRAFT



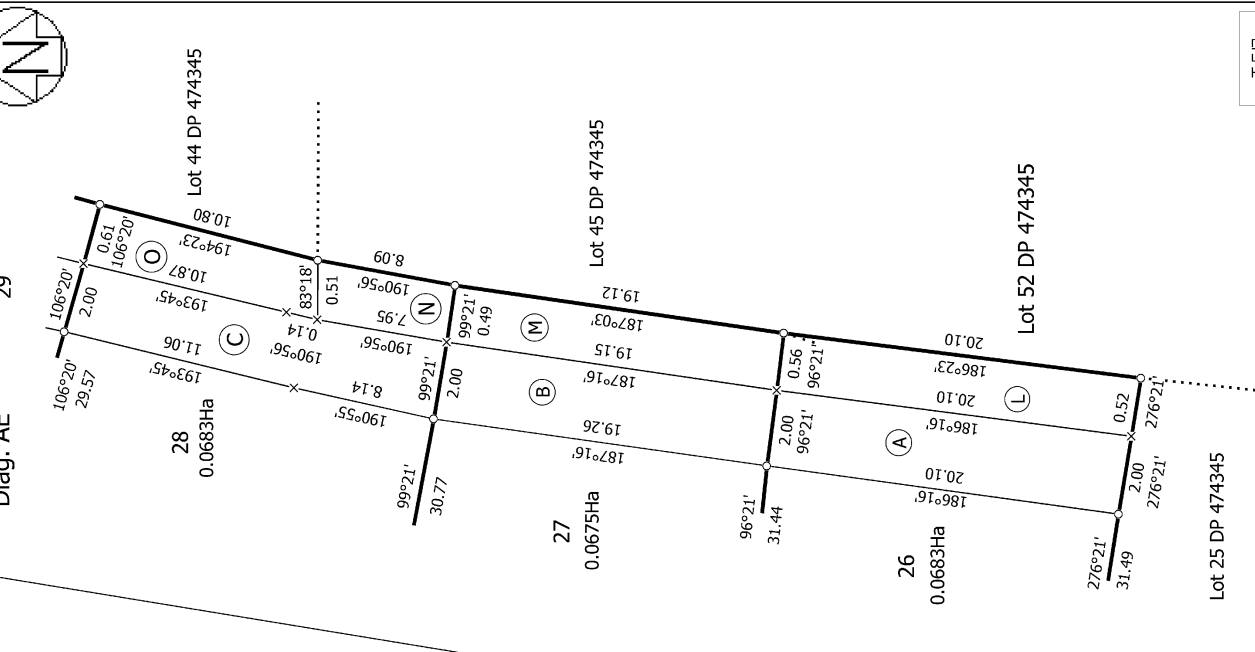
Diag. AAA

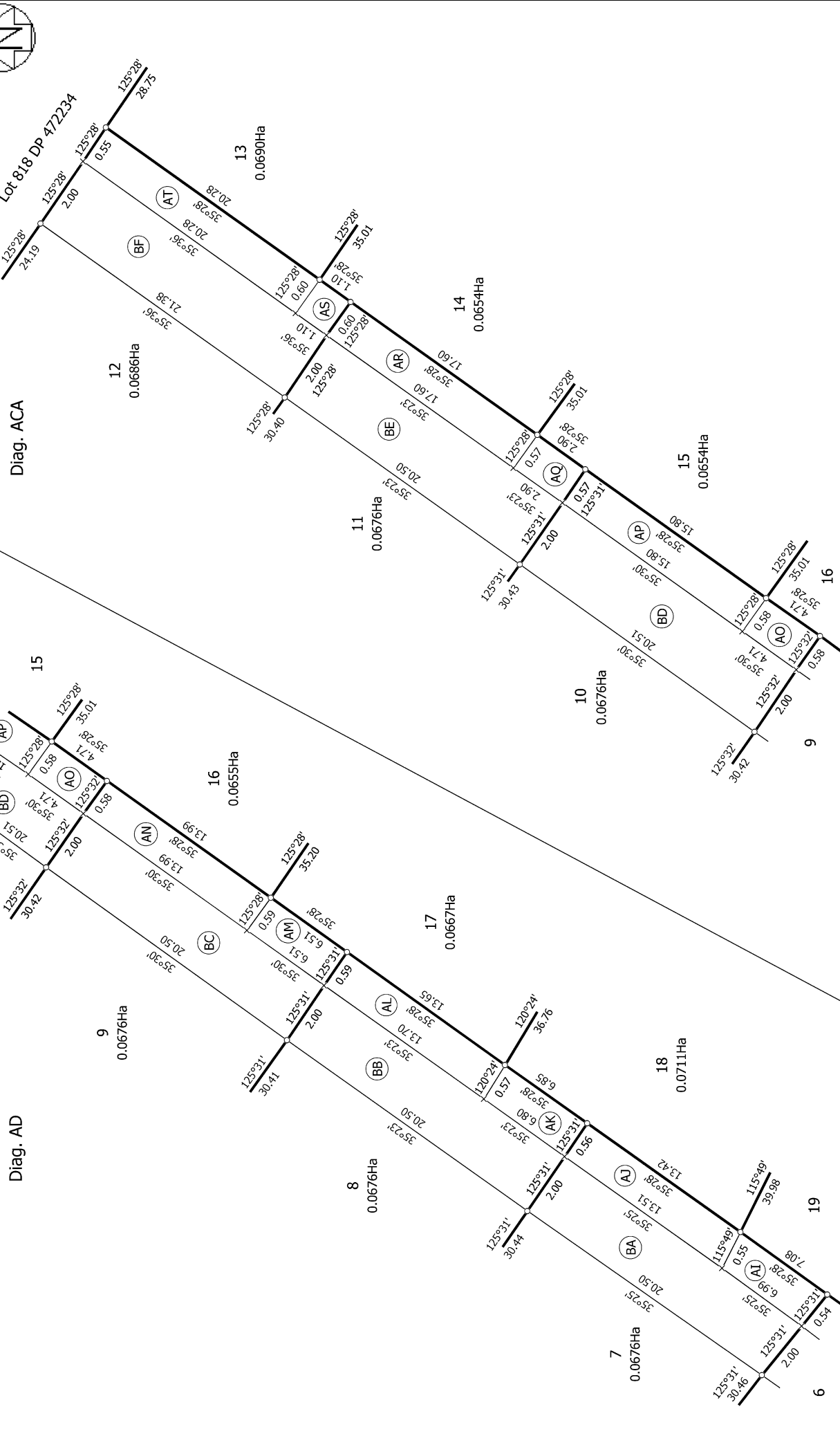
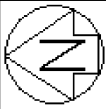


Diag. ABA



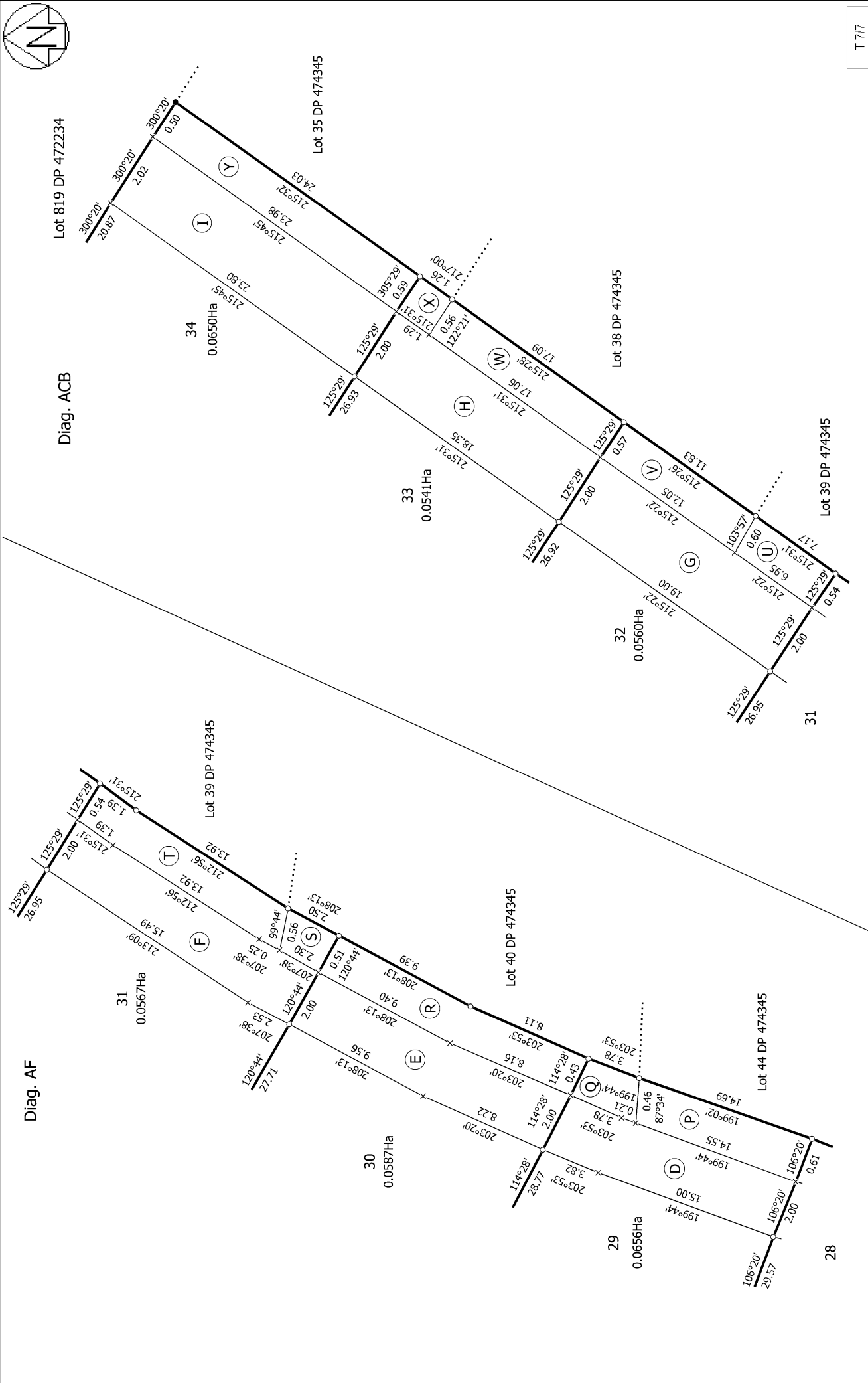
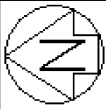
Diag. AE





T 6/7

<p>Land District: North Auckland</p> <p>Digitally Generated Plan</p> <p>Generated on: 06/01/2015 4:55pm Page 11 of 12</p>	<p>Lots 1 - 34, 814, 817, 900, 901 & 1000 Being a Subdivision of Lot 1000 DP 474345</p>	<p>Surveyor: Amanda Anne Crawford</p> <p>Firm: Wood & Partners Consultants Ltd</p>	<p>Title Plan</p> <p>LT 483316</p> <p>DRAFT</p>
--	--	--	--



T 717

Title Plan
 LT 483316
 DRAFT

Surveyor: Amanda Anne Crawford
 Firm: Wood & Partners Consultants Ltd

Lots 1 - 34, 814, 817, 900, 901 & 1000 Being a Subdivision of Lot 1000 DP 474345

Land District: North Auckland
Digitally Generated Plan
 Generated on: 06/01/2015 4:55pm Page 12 of 12