



# Title Plan - LT 510198

---

**Survey Number** LT 510198  
**Surveyor Reference** 33220 - Stage 4C  
**Surveyor** Michael Rowan Hallam  
**Survey Firm** Wood & Partners Consultants Ltd  
**Surveyor Declaration** I Michael Rowan Hallam, being a licensed cadastral surveyor, certify that:  
(a) this dataset provided by me and its related survey are accurate, correct and in accordance with the Cadastral Survey Act 2002 and the Rules for Cadastral Survey 2010, and  
(b) the survey was undertaken by me or under my personal direction.  
Declared on 23 Aug 2017 11:24 AM

---

## Survey Details

**Dataset Description** Lots 371, 399, 425 to 431, 438 to 445, 455 to 470, 911 & 2006 Being a Subdivision of Lot 2005 DP 510197  
**Status** Approved as to Survey  
**Land District** North Auckland  
**Submitted Date** 23/08/2017  
**Survey Class** Class A  
**Survey Approval Date** 23/08/2017  
**Deposit Date**

---

## Territorial Authorities

Auckland Council

---

## Comprised In

CT 784904

---

## Created Parcels

Parcels	Parcel Intent	Area	CT Reference
Lot 455 Deposited Plan 510198	Fee Simple Title	0.0651 Ha	789243
Lot 456 Deposited Plan 510198	Fee Simple Title	0.0403 Ha	789244
Lot 457 Deposited Plan 510198	Fee Simple Title	0.0404 Ha	789245
Lot 458 Deposited Plan 510198	Fee Simple Title	0.0400 Ha	789246
Lot 459 Deposited Plan 510198	Fee Simple Title	0.0414 Ha	789247
Lot 460 Deposited Plan 510198	Fee Simple Title	0.0533 Ha	789248
Lot 461 Deposited Plan 510198	Fee Simple Title	0.0409 Ha	789249
Lot 462 Deposited Plan 510198	Fee Simple Title	0.0670 Ha	789250
Lot 463 Deposited Plan 510198	Fee Simple Title	0.0650 Ha	789251
Lot 464 Deposited Plan 510198	Fee Simple Title	0.0505 Ha	789252
Lot 465 Deposited Plan 510198	Fee Simple Title	0.0535 Ha	789253
Lot 466 Deposited Plan 510198	Fee Simple Title	0.0557 Ha	789254
Lot 467 Deposited Plan 510198	Fee Simple Title	0.0537 Ha	789255
Lot 468 Deposited Plan 510198	Fee Simple Title	0.0513 Ha	789256
Lot 469 Deposited Plan 510198	Fee Simple Title	0.0514 Ha	789257
Lot 399 Deposited Plan 510198	Fee Simple Title	0.0650 Ha	789227
Lot 371 Deposited Plan 510198	Fee Simple Title	0.0662 Ha	789226
Lot 470 Deposited Plan 510198	Fee Simple Title	0.0667 Ha	789258
Lot 425 Deposited Plan 510198	Fee Simple Title	0.0651 Ha	789228
Lot 426 Deposited Plan 510198	Fee Simple Title	0.0546 Ha	789229

# Title Plan - LT 510198

---

## Created Parcels

Parcels	Parcel Intent	Area	CT Reference
Lot 427 Deposited Plan 510198	Fee Simple Title	0.0539 Ha	789230
Lot 428 Deposited Plan 510198	Fee Simple Title	0.0654 Ha	789231
Lot 429 Deposited Plan 510198	Fee Simple Title	0.0525 Ha	789232
Lot 430 Deposited Plan 510198	Fee Simple Title	0.0516 Ha	789233
Lot 431 Deposited Plan 510198	Fee Simple Title	0.0653 Ha	789234
Lot 438 Deposited Plan 510198	Fee Simple Title	0.0657 Ha	789235
Lot 439 Deposited Plan 510198	Fee Simple Title	0.0652 Ha	789236
Lot 440 Deposited Plan 510198	Fee Simple Title	0.0535 Ha	789237
Lot 441 Deposited Plan 510198	Fee Simple Title	0.0531 Ha	789238
Lot 442 Deposited Plan 510198	Fee Simple Title	0.0531 Ha	789239
Lot 443 Deposited Plan 510198	Fee Simple Title	0.0525 Ha	789240
Lot 444 Deposited Plan 510198	Fee Simple Title	0.0515 Ha	789241
Lot 445 Deposited Plan 510198	Fee Simple Title	0.0527 Ha	789242
Lot 911 Deposited Plan 510198	Vesting on Deposit for Road	0.7960 Ha	
Area A Deposited Plan 510198	Easement		
Area B Deposited Plan 510198	Easement		
Area C Deposited Plan 510198	Easement		
Area D Deposited Plan 510198	Easement		
Area E Deposited Plan 510198	Easement		
Area F Deposited Plan 510198	Easement		
Area G Deposited Plan 510198	Easement		
Area H Deposited Plan 510198	Easement		
Area I Deposited Plan 510198	Easement		
Area J Deposited Plan 510198	Easement		
Area K Deposited Plan 510198	Easement		
Area L Deposited Plan 510198	Easement		
Area M Deposited Plan 510198	Easement		
Area N Deposited Plan 510198	Easement		
Area O Deposited Plan 510198	Easement		
Area P Deposited Plan 510198	Easement		
Area Q Deposited Plan 510198	Easement		
Area R Deposited Plan 510198	Easement		
Area S Deposited Plan 510198	Land Covenant		
Area T Deposited Plan 510198	Land Covenant		
Area U Deposited Plan 510198	Land Covenant		
Area V Deposited Plan 510198	Land Covenant		
Area W Deposited Plan 510198	Land Covenant		
Area X Deposited Plan 510198	Land Covenant		
Area Y Deposited Plan 510198	Land Covenant		
Area Z Deposited Plan 510198	Land Covenant		
Area AA Deposited Plan 510198	Land Covenant		
Area AB Deposited Plan 510198	Land Covenant		
Area AC Deposited Plan 510198	Land Covenant		

# Title Plan - LT 510198

---

## Created Parcels

Parcels	Parcel Intent	Area	CT Reference
Area AD Deposited Plan 510198	Land Covenant		
Area AE Deposited Plan 510198	Land Covenant		
Area AF Deposited Plan 510198	Land Covenant		
Area AG Deposited Plan 510198	Land Covenant		
Area AH Deposited Plan 510198	Land Covenant		
Area AI Deposited Plan 510198	Land Covenant		
Area BA Deposited Plan 510198	Land Covenant		
Area BB Deposited Plan 510198	Land Covenant		
Area BC Deposited Plan 510198	Land Covenant		
Area BD Deposited Plan 510198	Land Covenant		
Area BE Deposited Plan 510198	Land Covenant		
Area BF Deposited Plan 510198	Land Covenant		
Area BG Deposited Plan 510198	Land Covenant		
Area BH Deposited Plan 510198	Land Covenant		
Area BI Deposited Plan 510198	Land Covenant		
Area BJ Deposited Plan 510198	Land Covenant		
Area BK Deposited Plan 510198	Land Covenant		
Area BL Deposited Plan 510198	Land Covenant		
Area BM Deposited Plan 510198	Land Covenant		
Area BN Deposited Plan 510198	Land Covenant		
Area BO Deposited Plan 510198	Land Covenant		
Area BP Deposited Plan 510198	Land Covenant		
Lot 2006 Deposited Plan 510198	Fee Simple Title	3.5645 Ha	789259
<b>Total Area</b>		<u>6.1836 Ha</u>	



Lots 371, 399, 425 - 431, 438 – 445, 455 - 470, 911 and 2006 Being a Subdivision of Lot 2005 DP 510197	
LAND REGISTRATION DISTRICT	NORTH AUCKLAND
PLAN NUMBER	DP 510198
TERRITORIAL AUTHORITY	AUCKLAND COUNCIL
TERRITORIAL AUTHORITY REF	SLC-62477C
DATE	JUNE 2017
OUR REF	33220 Millwater P2 S4C

SCHEDULE OF EXISTING EASEMENTS TO BE RETAINED					
PURPOSE	PREVIOUSLY SHOWN AS	NOW SHOWN AS	SERVIENT TENEMENT	DOMINANT TENEMENT	CREATED BY
RIGHT TO MAINTAIN GARDEN	'CE' DP 510197	'H' Hereon	LOT 463HEREON	LOT 1014 DP 507389	E.I. 10808399.10
	'CD' DP 510197	'A' Hereon	LOT 470 HEREON	LOT 704 DP 507389	
		'B' Hereon	LOT 469 HEREON		
		'C' Hereon	LOT 468 HEREON		
		'D' Hereon	LOT 467 HEREON		
		'E' Hereon	LOT 466 HEREON		
		'F' Hereon	LOT 465 HEREON		
		'G' Hereon	LOT 464 HEREON		
	'CG' DP 510197	'Q' Hereon	LOT 455 HEREON	LOT 1011 DP 507389	
	'CF' DP 510197	'I' Hereon	LOT 462 HEREON	Lot 703 DP 507389	
		'J' Hereon	LOT 461 HEREON		
		'K' Hereon	LOT 460 HEREON		
		'L' Hereon	LOT 459 HEREON		
		'M' Hereon	LOT 458 HEREON		
		'N' Hereon	LOT 457 HEREON		
'O' Hereon		LOT 456 HEREON			
'P' Hereon	LOT 455 HEREON				

PROPOSED SCHEDULE OF EASEMENTS			
PURPOSE	SHOWN AS	SERVIENT TENEMENT	DOMINANT TENEMENT
RIGHT TO MAINTAIN GARDEN	AREA R HEREON	LOT 399 HEREON	LOT 702 DP 505105



Lots 371, 399, 425 - 431, 438 – 445, 455 - 470, 911 and 2006 Being a Subdivision of Lot 2005 DP 510197	
LAND REGISTRATION DISTRICT	NORTH AUCKLAND
PLAN NUMBER	DP 510198
TERRITORIAL AUTHORITY	AUCKLAND COUNCIL
TERRITORIAL AUTHORITY REF	SLC-62477C
DATE	JUNE 2017
OUR REF	33220 Millwater P2 S4C

LAND COVENANTS

AREAS SHOWN AS AREA S – AI HEREON ARE TO BE SUBJECT TO LAND COVENANTS.

AREAS SHOWN AS BA - BP HEREON ARE TO BE SUBJECT TO LAND COVENANTS.



Diag. A

Lot 2000 DP 505105

Diag. AD  
See T6

Lot 1000 DP 483316

Diag. AE  
See T3

Diag. AA  
See T6

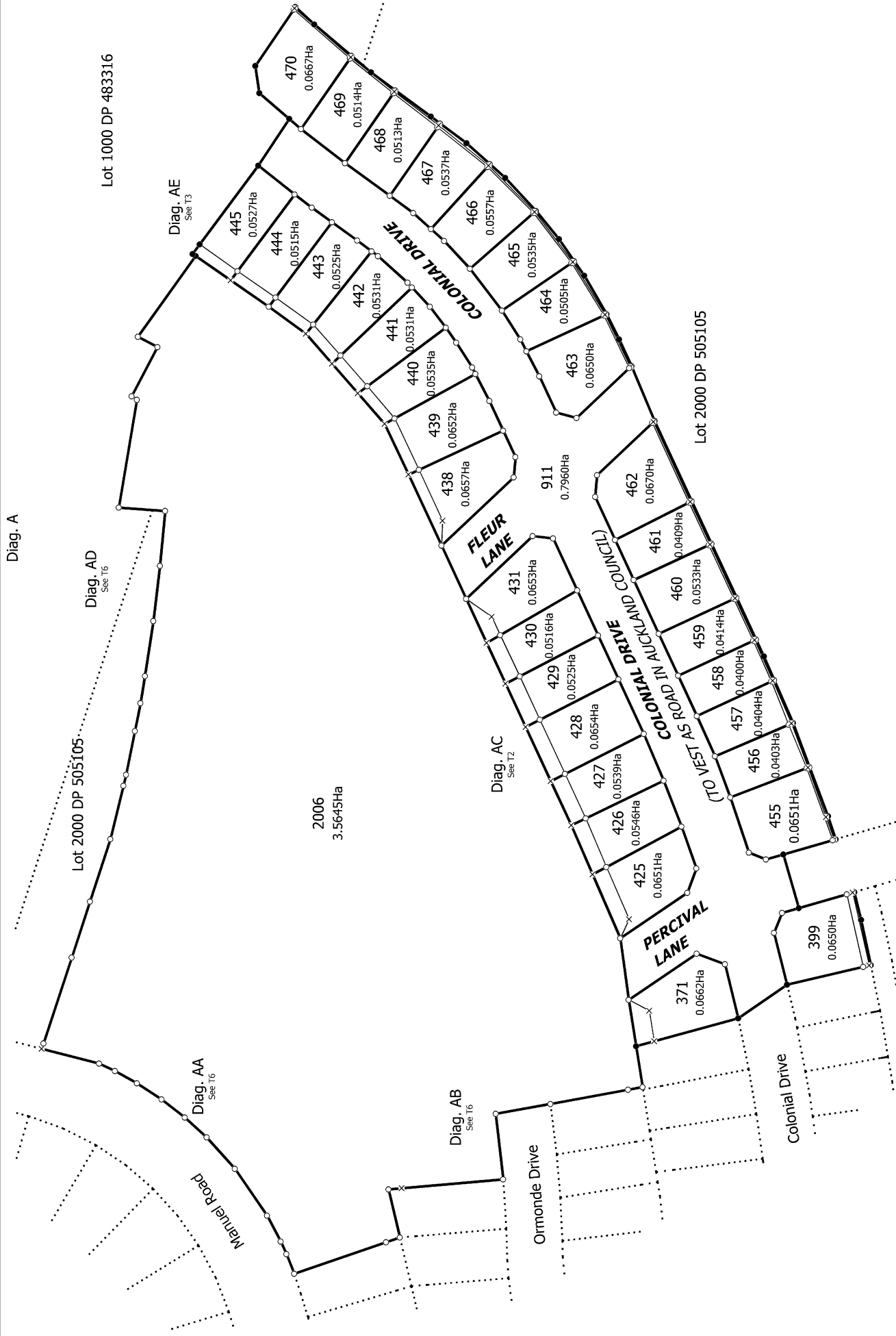
Diag. AB  
See T6

Diag. AC  
See T2

2006  
3.5645Ha

Lot 2000 DP 505105

T 1/6



Land District: North Auckland

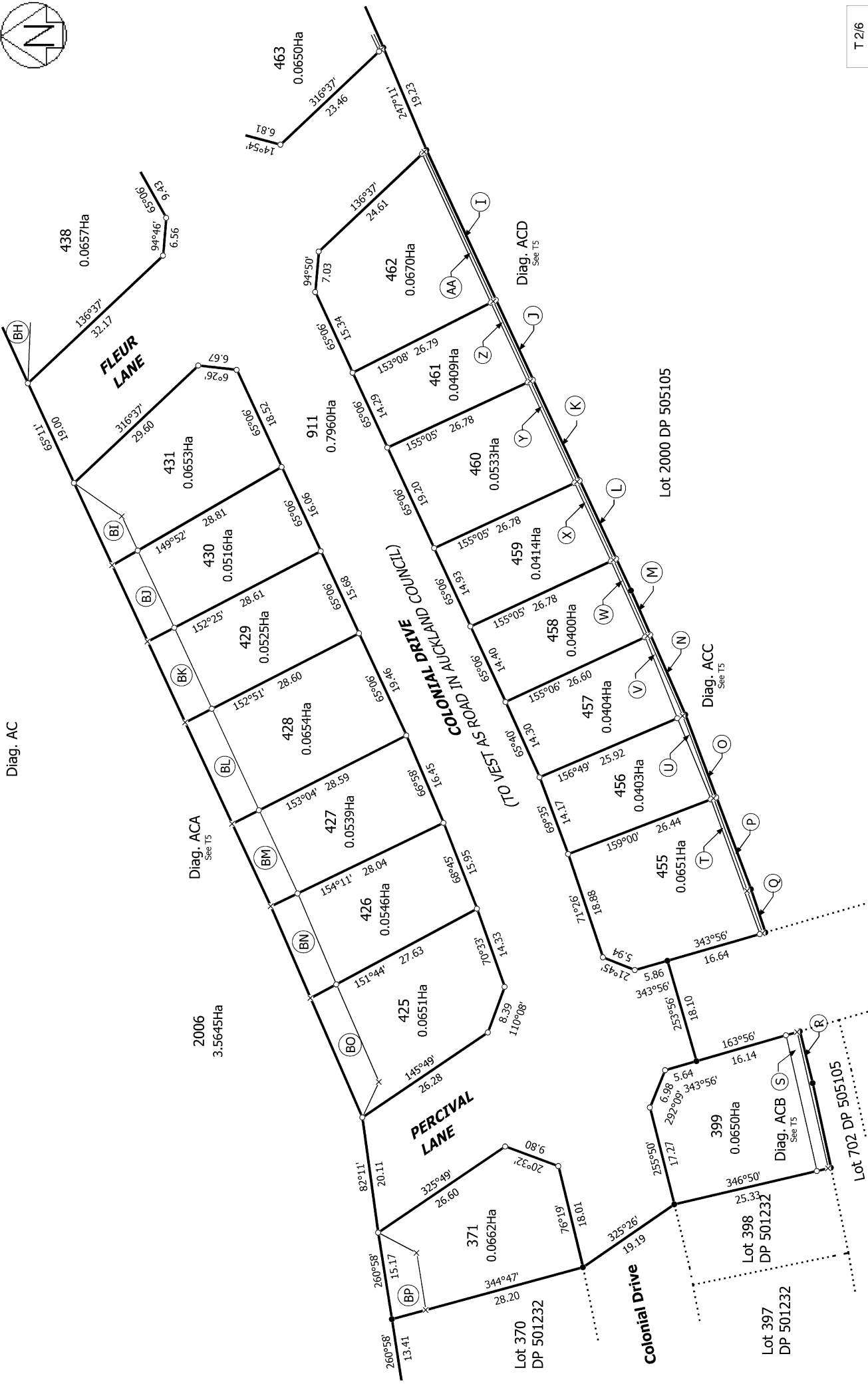
Digitally Generated Plan

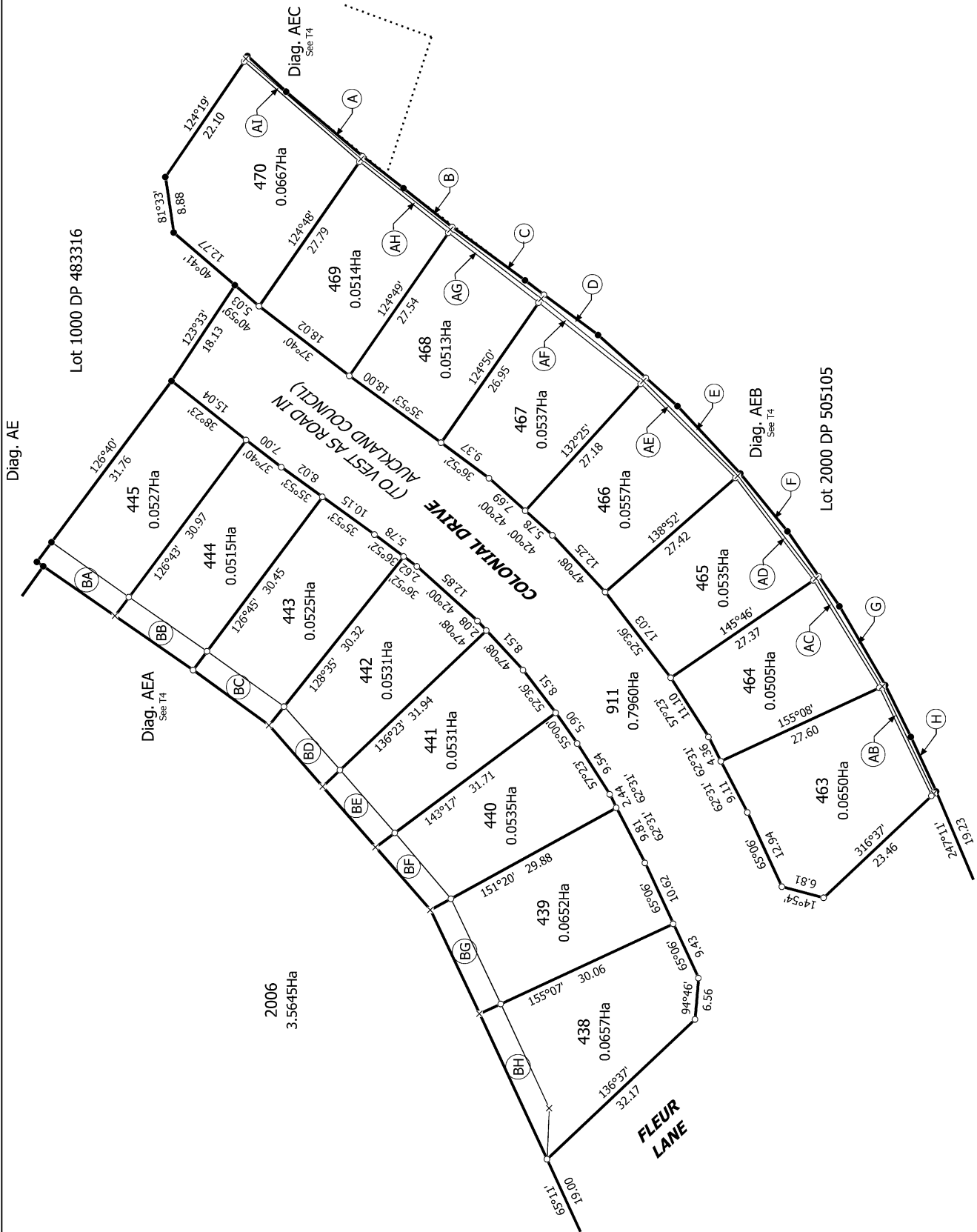
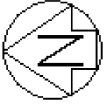
Generated on: 23/08/2017 12:09pm Page 6 of 11

Lots 371, 399, 425 to 431, 438 to 445, 455 to 470, 911 & 2006 Being a  
Subdivision of Lot 2005 DP 510197

Surveyor: Michael Rowan Hallam  
Firm: Wood & Partners Consultants Ltd

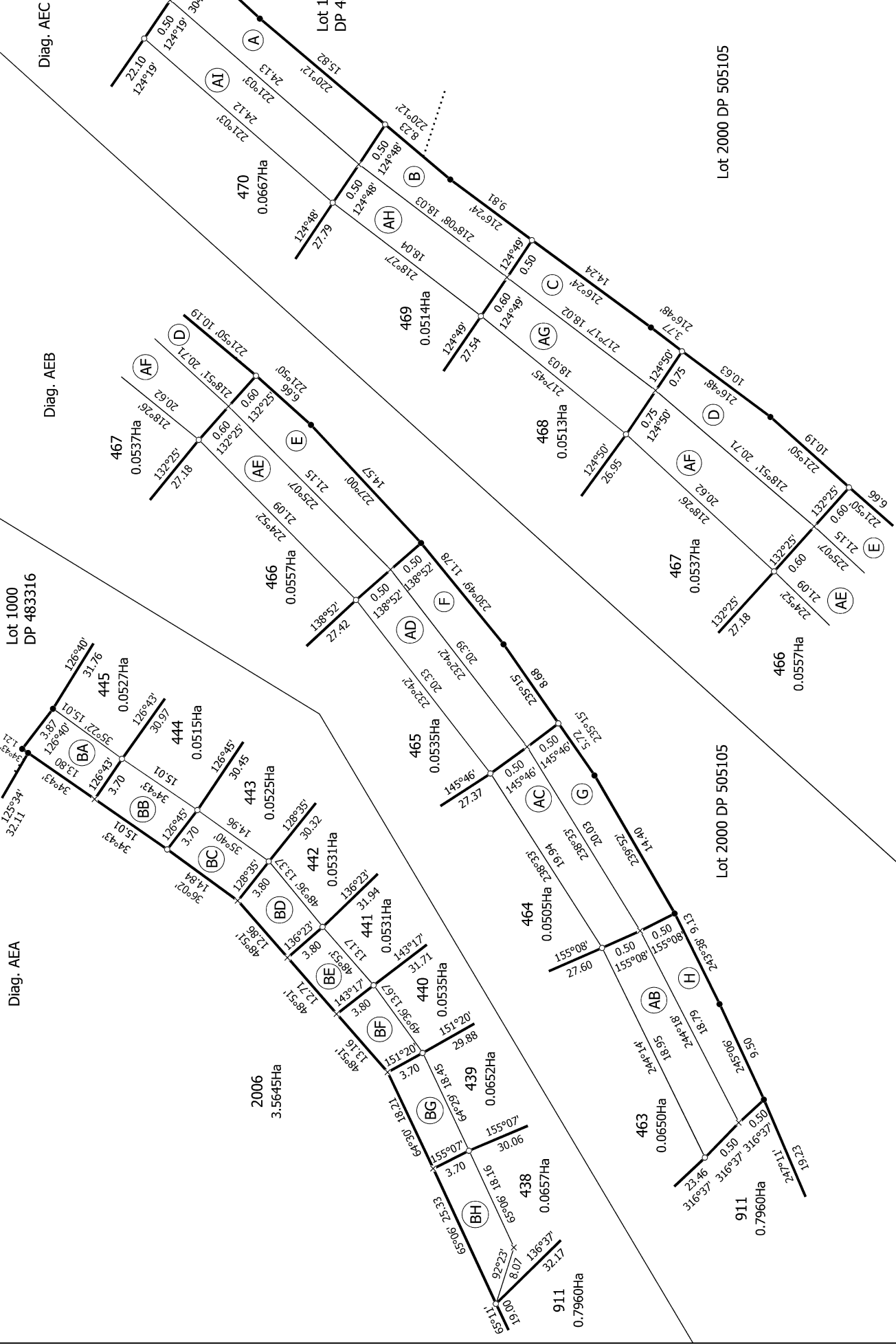
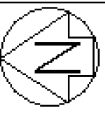
Title Plan  
LT 510198  
Approved on: 23/08/2017





T 3/6





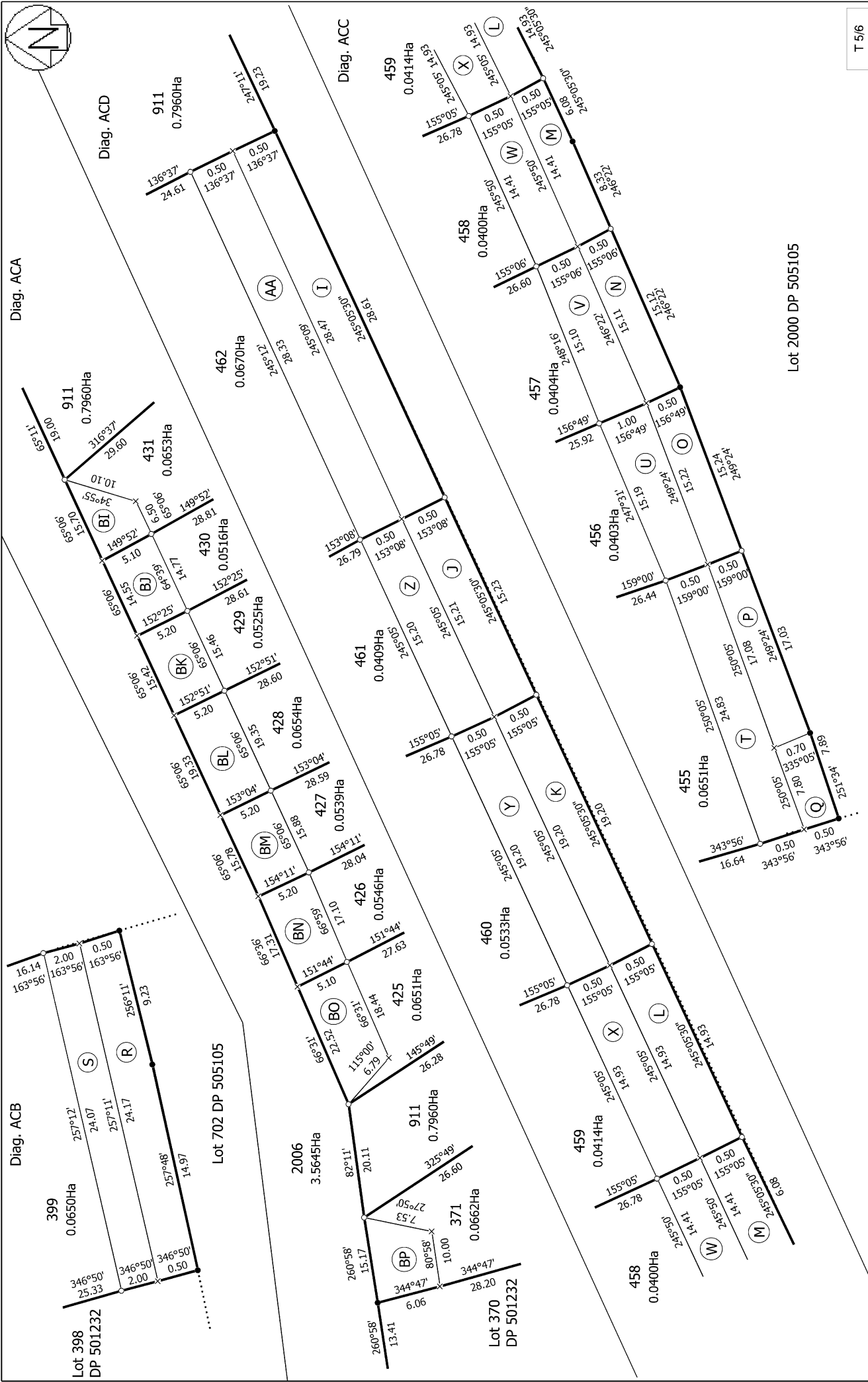
T 4/6

Land District: North Auckland  
**Digitally Generated Plan**  
 Generated on: 23/08/2017 12:09:01 Page 9 of 11

**Lots 371, 399, 425 to 431, 438 to 445, 455 to 470, 911 & 2006 Being a Subdivision of Lot 2005 DP 510197**

Surveyor: Michael Rowan Hallam  
 Firm: Wood & Partners Consultants Ltd

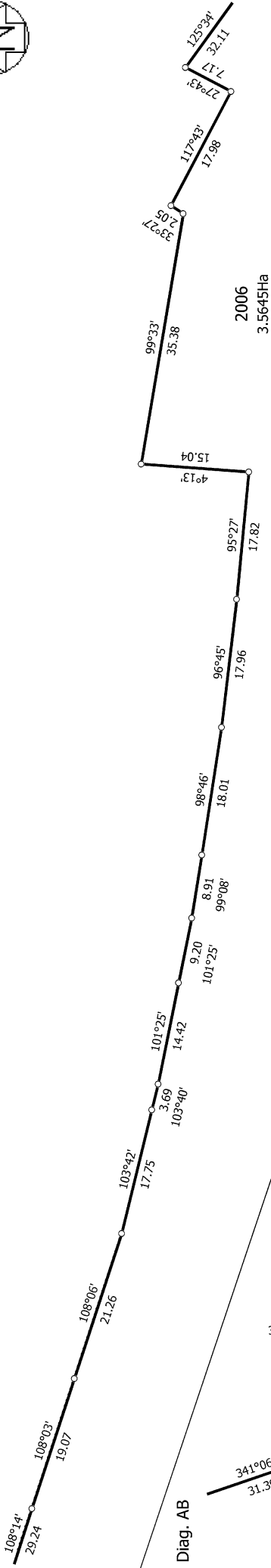
**Title Plan**  
 LT 510198  
 Approved on: 23/08/2017



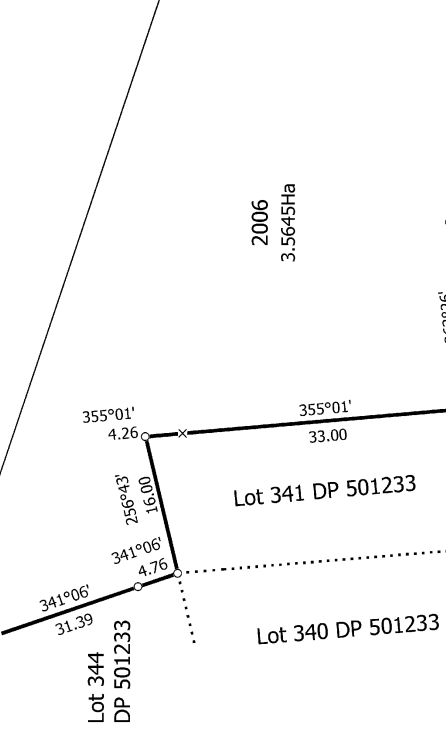
<p>Land District: North Auckland</p> <p><b>Digitally Generated Plan</b></p> <p>Generated on: 23/08/2017 12:09pm   Page 10 of 11</p>	<p><b>Lots 371, 399, 425 to 431, 438 to 445, 455 to 470, 911 &amp; 2006 Being a Subdivision of Lot 2005 DP 510197</b></p>	<p>Surveyor: Michael Rowan Hallam Firm: Wood &amp; Partners Consultants Ltd</p>	<p><b>Title Plan</b> LT 510198 Approved on: 23/08/2017</p>
---	---	---	--



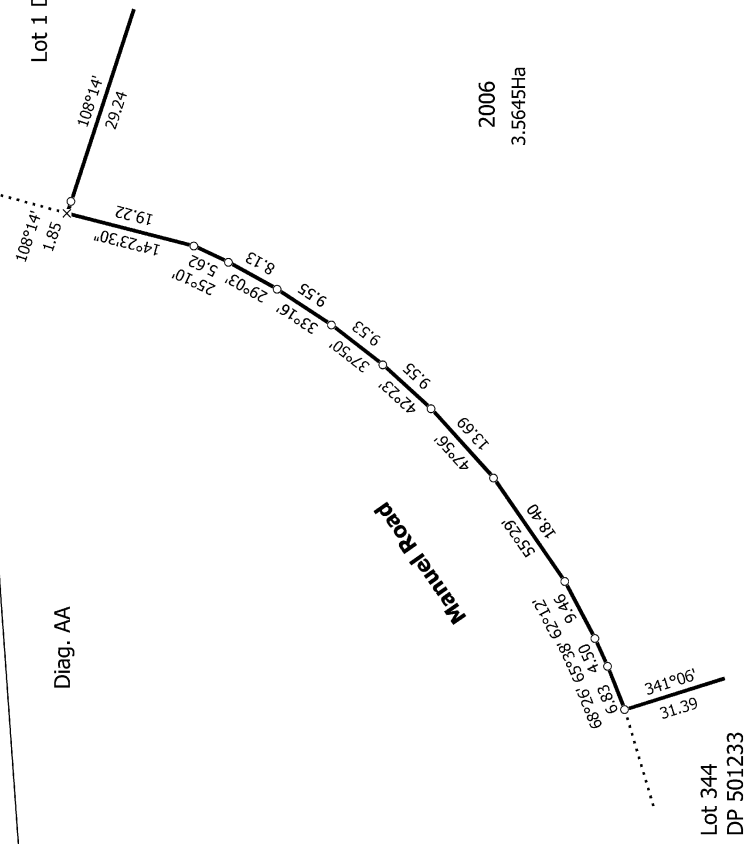
Diag. AD



Diag. AB



Diag. AA



Ormonde Drive

Manuel Road

Land District: North Auckland

Digitally Generated Plan

Generated on: 23/08/2017 12:09pm Page 11 of 11

Lots 371, 399, 425 to 431, 438 to 445, 455 to 470, 911 & 2006 Being a Subdivision of Lot 2005 DP 510197

Surveyor: Michael Rowan Hallam  
Firm: Wood & Partners Consultants Ltd

Title Plan  
LT 510198  
Approved on: 23/08/2017

T 6/6