



Title Plan - LT 527534

Survey Number LT 527534
Surveyor Reference Arran Hill P5 S3A
Surveyor Kendall Lisa Reid
Survey Firm Wood & Partners Consultants Ltd
Surveyor Declaration

Survey Details

Dataset Description Lots 902, 1001, 37 to 47, 213 to 215 and 155 to 163 Being a Subdivision of Lot 1000 DP 522519
Status Initiated
Land District North Auckland
Submitted Date
Survey Class Class A
Survey Approval Date
Deposit Date

Territorial Authorities

Auckland Council

Comprised In

CT 836326

Created Parcels

Parcels	Parcel Intent	Area	CT Reference
Lot 163 Deposited Plan 527534	Fee Simple Title	0.0650 Ha	850561
Lot 162 Deposited Plan 527534	Fee Simple Title	0.0651 Ha	850562
Lot 161 Deposited Plan 527534	Fee Simple Title	0.0520 Ha	850563
Lot 160 Deposited Plan 527534	Fee Simple Title	0.0521 Ha	850564
Lot 159 Deposited Plan 527534	Fee Simple Title	0.0517 Ha	850565
Lot 158 Deposited Plan 527534	Fee Simple Title	0.0533 Ha	850566
Lot 157 Deposited Plan 527534	Fee Simple Title	0.0520 Ha	850567
Lot 156 Deposited Plan 527534	Fee Simple Title	0.0520 Ha	850568
Lot 155 Deposited Plan 527534	Fee Simple Title	0.0650 Ha	850569
Lot 215 Deposited Plan 527534	Fee Simple Title	0.0550 Ha	850570
Lot 214 Deposited Plan 527534	Fee Simple Title	0.0525 Ha	850571
Lot 213 Deposited Plan 527534	Fee Simple Title	0.0551 Ha	850572
Lot 37 Deposited Plan 527534	Fee Simple Title	0.0651 Ha	850573
Lot 38 Deposited Plan 527534	Fee Simple Title	0.0650 Ha	850574
Lot 39 Deposited Plan 527534	Fee Simple Title	0.0651 Ha	850575
Lot 40 Deposited Plan 527534	Fee Simple Title	0.0650 Ha	850576
Lot 41 Deposited Plan 527534	Fee Simple Title	0.0651 Ha	850577
Lot 42 Deposited Plan 527534	Fee Simple Title	0.0650 Ha	850578
Lot 43 Deposited Plan 527534	Fee Simple Title	0.0571 Ha	850579
Lot 44 Deposited Plan 527534	Fee Simple Title	0.0559 Ha	850580
Lot 45 Deposited Plan 527534	Fee Simple Title	0.0563 Ha	850581
Lot 46 Deposited Plan 527534	Fee Simple Title	0.0575 Ha	850582
Lot 47 Deposited Plan 527534	Fee Simple Title	0.0589 Ha	850583
Area BR Deposited Plan 527534	Land Covenant		

Title Plan - LT 527534

Created Parcels

Parcels	Parcel Intent	Area	CT Reference
Area BQ Deposited Plan 527534	Land Covenant		
Area BP Deposited Plan 527534	Land Covenant		
Area BO Deposited Plan 527534	Land Covenant		
Area BN Deposited Plan 527534	Land Covenant		
Area BM Deposited Plan 527534	Land Covenant		
Area BL Deposited Plan 527534	Land Covenant		
Area BK Deposited Plan 527534	Land Covenant		
Area Z Deposited Plan 527534	Land Covenant		
Area AA Deposited Plan 527534	Land Covenant		
Area AB Deposited Plan 527534	Land Covenant		
Area AC Deposited Plan 527534	Land Covenant		
Area AD Deposited Plan 527534	Land Covenant		
Area AE Deposited Plan 527534	Land Covenant		
Area AF Deposited Plan 527534	Land Covenant		
Area AG Deposited Plan 527534	Land Covenant		
Area AH Deposited Plan 527534	Land Covenant		
Area AI Deposited Plan 527534	Land Covenant		
Area AJ Deposited Plan 527534	Land Covenant		
Lot 902 Deposited Plan 527534	Vesting on Deposit for Road	0.5981 Ha	
Marginal Strip HH Deposited Plan 527534	Marginal Strip - Movable		
Marginal Strip II Deposited Plan 527534	Marginal Strip - Movable		
Lot 1001 Deposited Plan 527534	Fee Simple Title	13.9300 Ha	
Total Area		<u>15.8749 Ha</u>	

Schedule / Memorandum

Land Registration District

North Auckland

Survey Number

LT 527534

Territorial Authority (the Council)

Auckland Council

Notes

Last Edited: 14 Aug 2018 17:30:55

Land Covenants

Areas Z and AA to AJ are subject to Land Covenants.

Areas BK to BR are subject to Land Covenants.

Notes

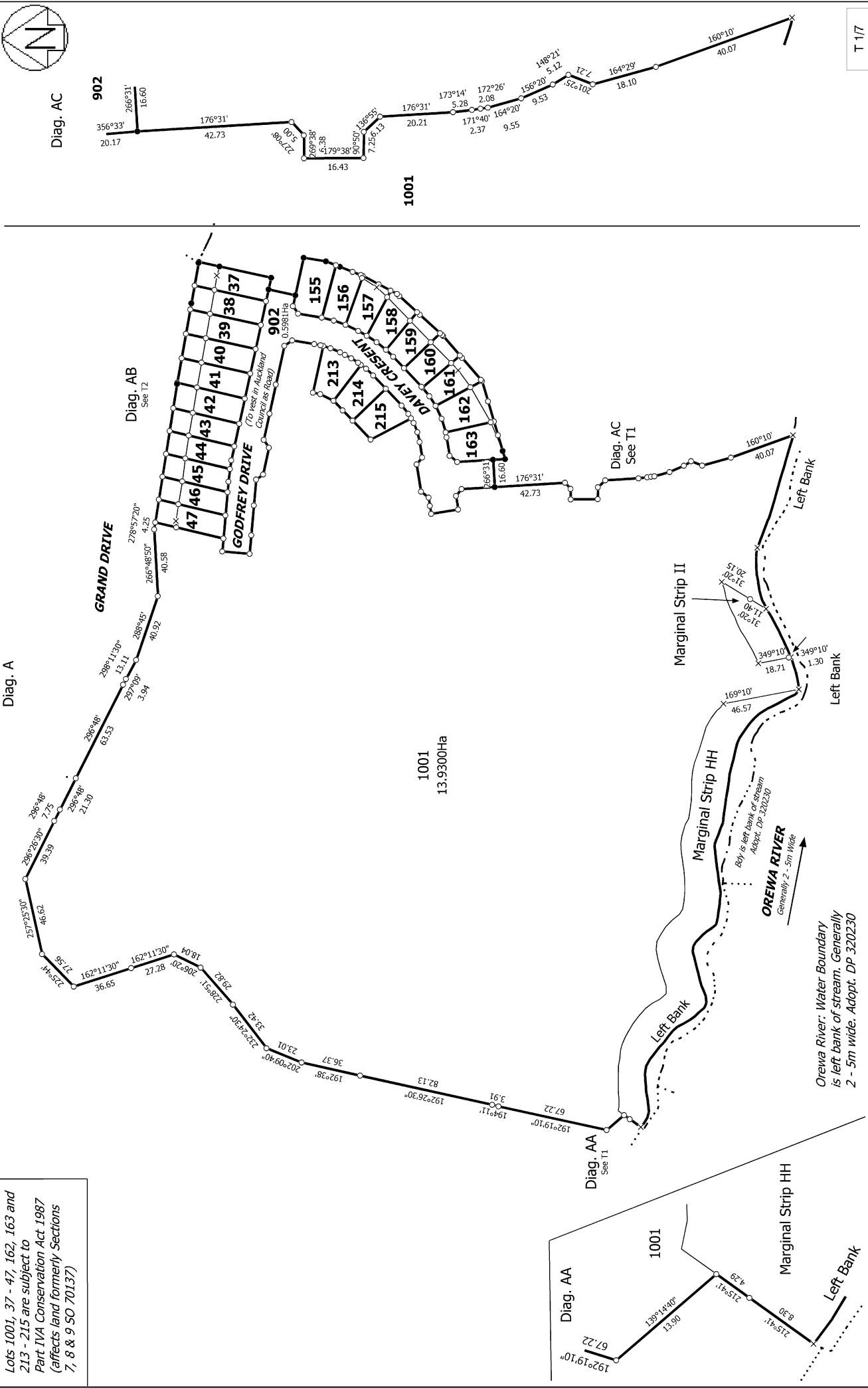
Last Edited: 14 Aug 2018 17:32:59

Moveable Marginal Strips:

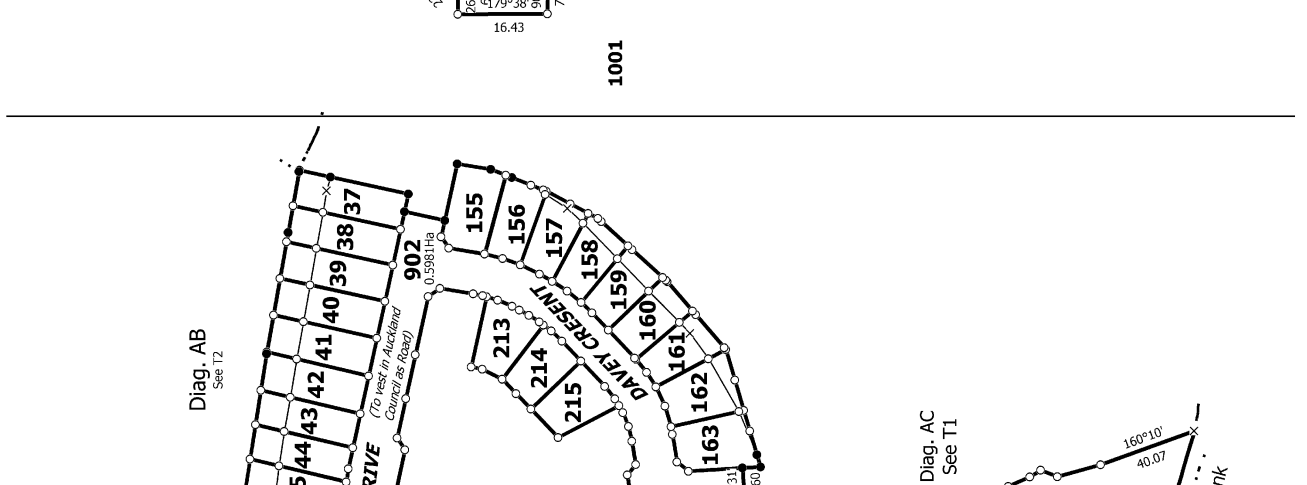
Moveable Marginal Strips HH & II Are existing Moveable Marginal Strips previously shown as Area HH & II DP 522519.

Lots 1001, 37 - 47, 162, 163 and 213 - 215 are subject to Part IVA Conservation Act 1987 (affects land formerly Sections 7, 8 & 9 SO 70137)

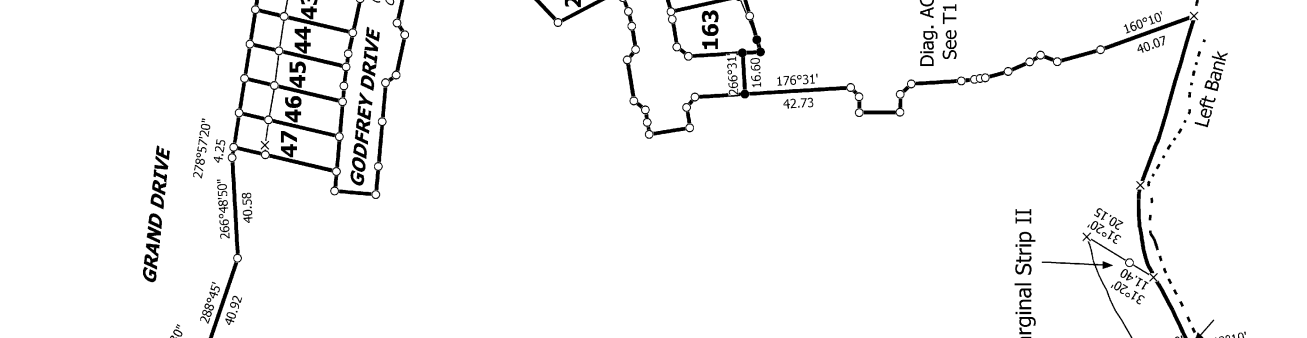
Diag. A



Diag. AC



Diag. AB



Diag. AA



T 1/7

Land District: North Auckland
Digitally Generated Plan
 Generated on: 15/08/2018 11:55am Page 4 of 10

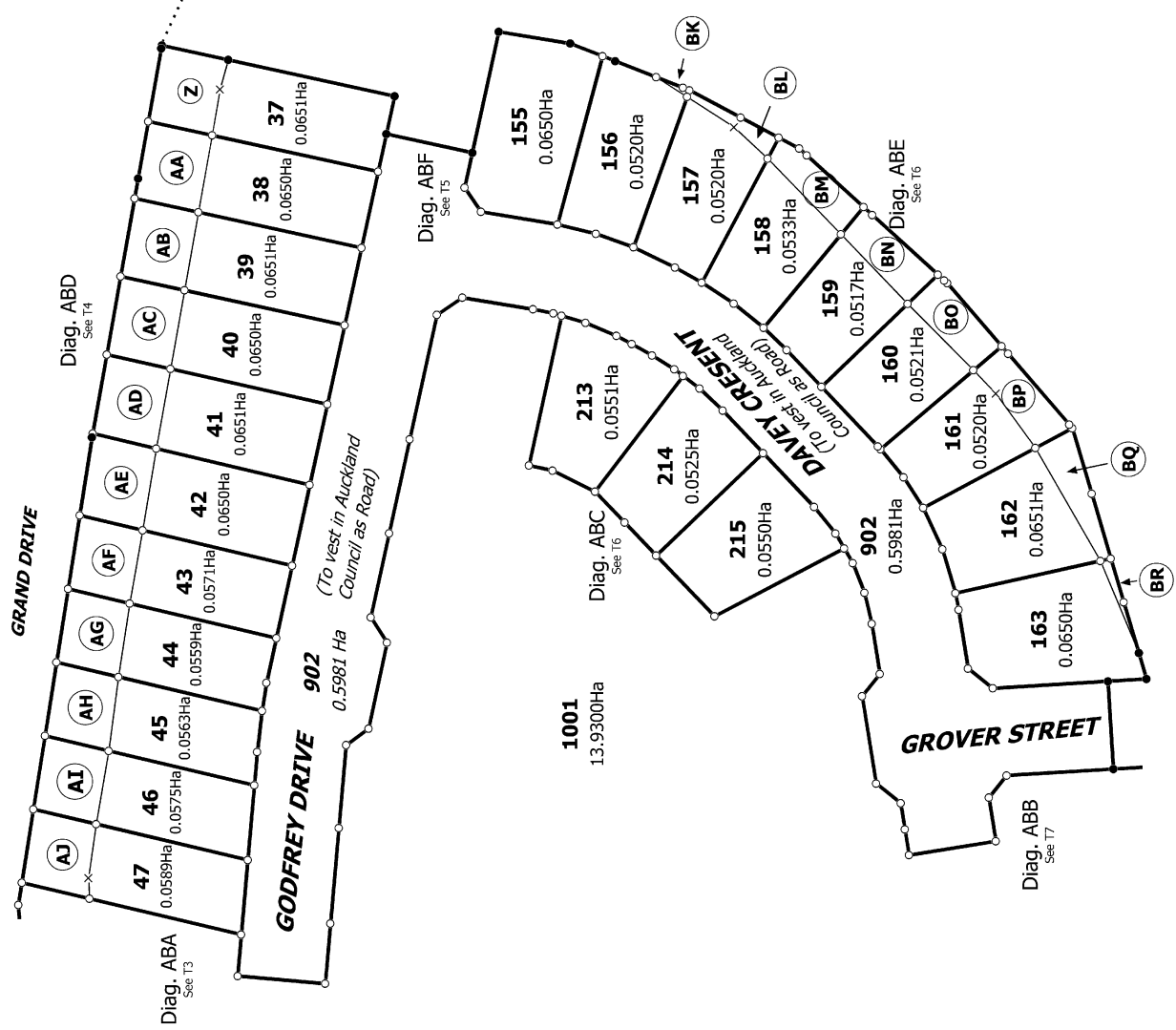
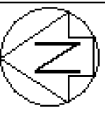
Lots 902, 1001, 37 to 47, 213 to 215 and 155 to 163 Being a Subdivision of Lot 1000 DP 522519

Surveyor: Kendall Lisa Reid
 Firm: Wood & Partners Consultants Ltd

**Title Plan
 LT 527534
 DRAFT**

Lots 1001, 37 - 47, 162, 163 and 213 - 215 are subject to Part IVA Conservation Act 1987 (affects land formerly Sections 7, 8 & 9 SO 70137)

Diag. AB



T 2/7

Land District: North Auckland

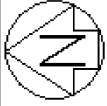
Digitally Generated Plan

Generated on: 15/08/2018 11:55am | Page 5 of 10

Lots 902, 1001, 37 to 47, 213 to 215 and 155 to 163 Being a Subdivision of Lot 1000 DP 522519

Surveyor: Kendall Lisa Reid
Firm: Wood & Partners Consultants Ltd

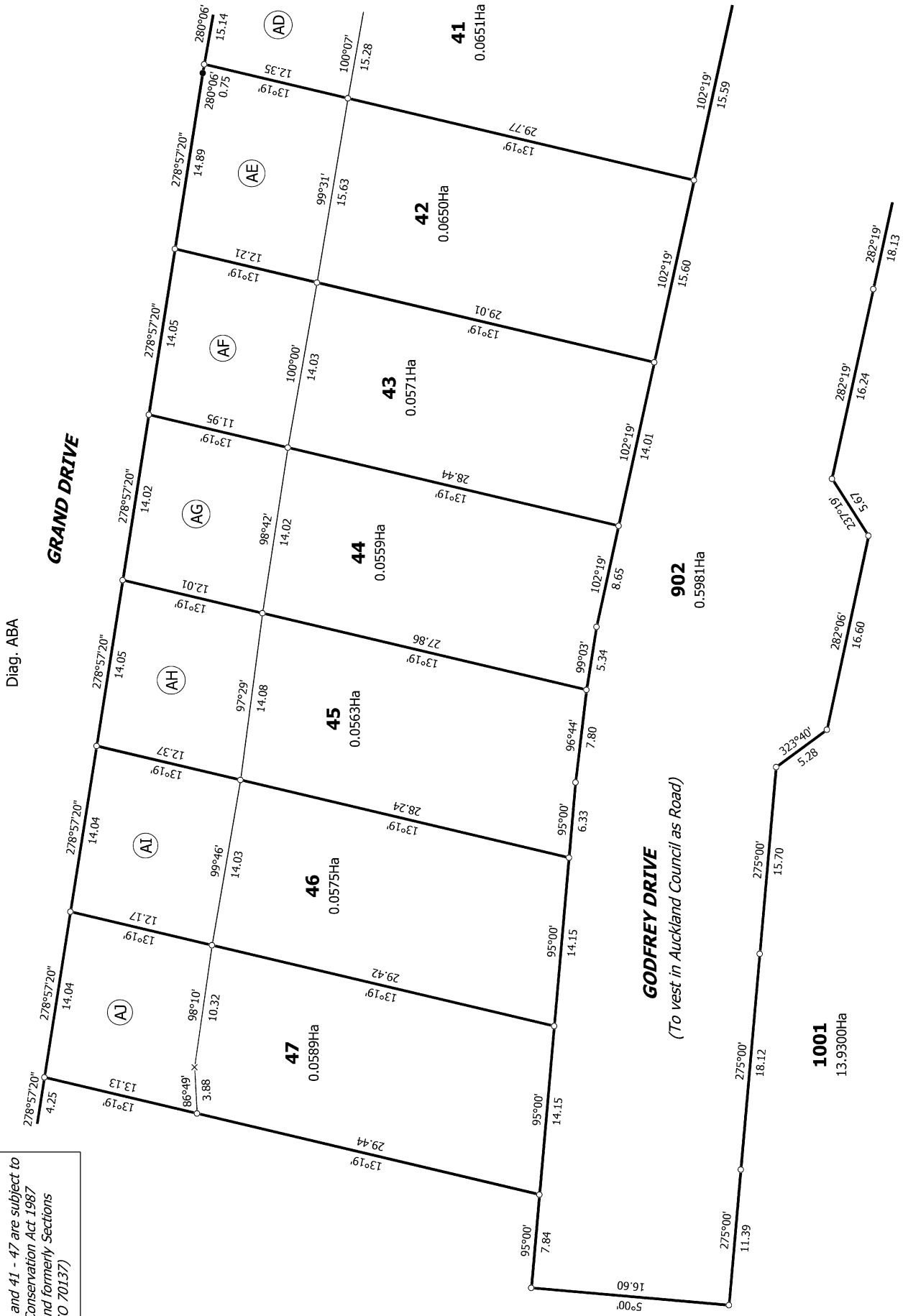
Title Plan
LT 527534
DRAFT



Diag. ABA

GRAND DRIVE

GODFREY DRIVE
(To vest in Auckland Council as Road)



Lots 1001 and 41 - 47 are subject to Part IVA Conservation Act 1987 (affects land formerly Sections 7, 8 & 9 SO 70137)

T 3/7

Land District: North Auckland

Digitally Generated Plan

Generated on: 15/08/2018 11:55am Page 6 of 10

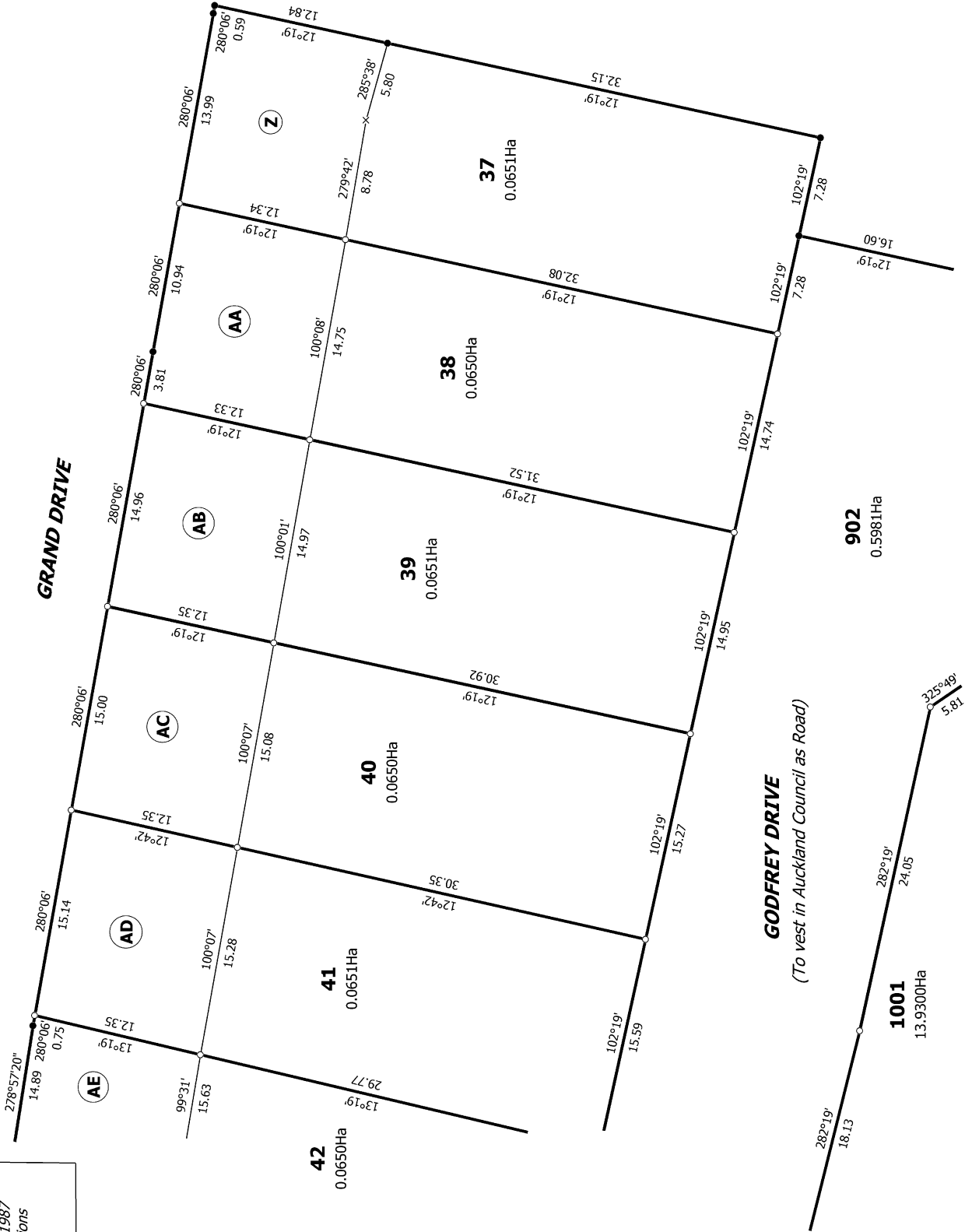
Lots 902, 1001, 37 to 47, 213 to 215 and 155 to 163 Being a Subdivision of Lot 1000 DP 522519

Surveyor: Kendall Lisa Reid
Firm: Wood & Partners Consultants Ltd

Title Plan
LT 527534
DRAFT



Diag. ABD



Lots 1001 and 37 - 42 are subject to Part IVA Conservation Act 1987 (affects land formerly Sections 7, 8 & 9 SO 70137)

T 4/7

Land District: North Auckland

Digitally Generated Plan

Generated on: 15/08/2018 11:55am Page 7 of 10

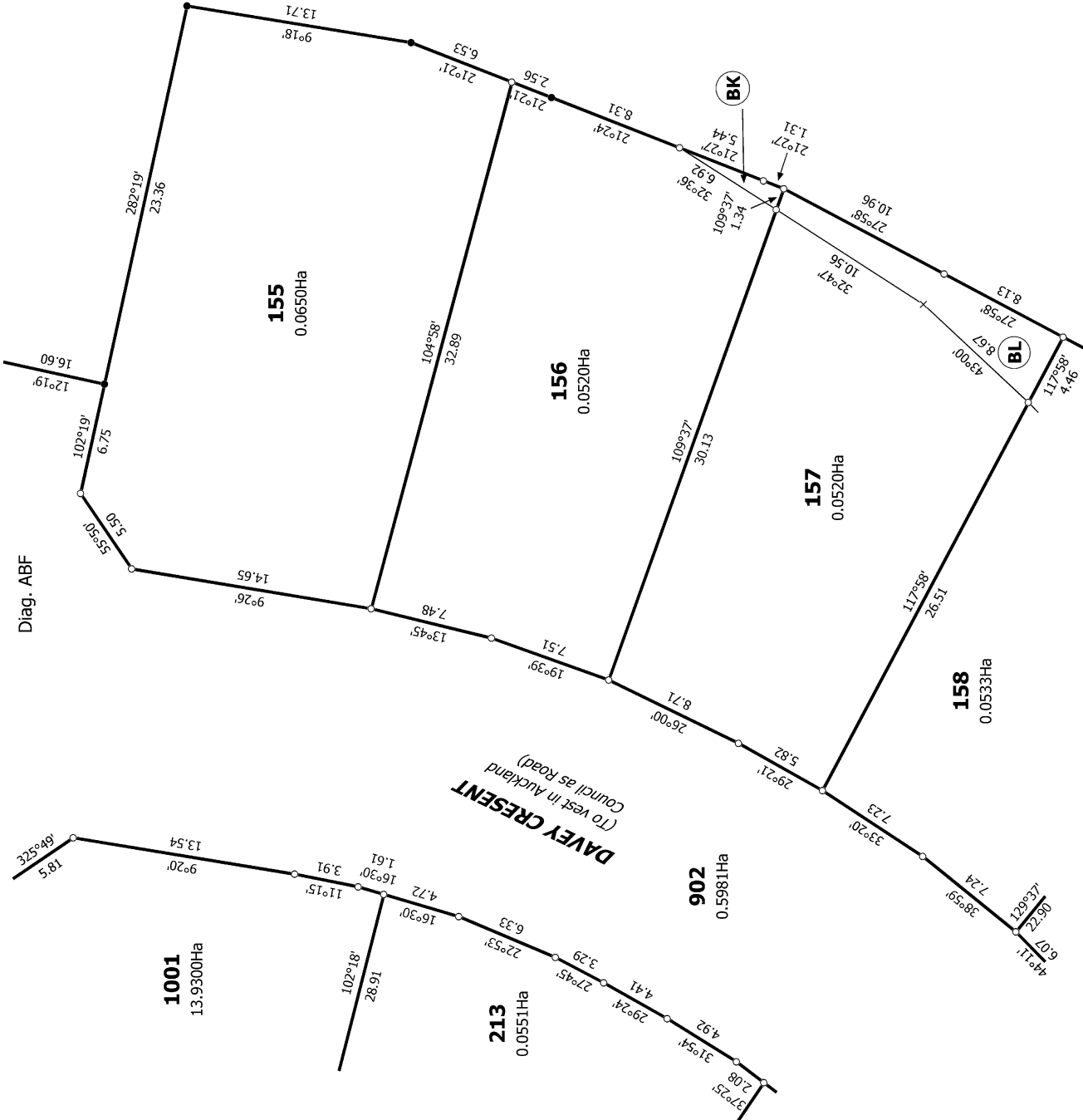
Lots 902, 1001, 37 to 42, 213 to 215 and 155 to 163 Being a Subdivision of Lot 1000 DP 522519

Surveyor: Kendall Lisa Reid
Firm: Wood & Partners Consultants Ltd

Title Plan
LT 527534
DRAFT



Lots 1001 and 213 are subject to Part IVA Conservation Act 1987 (affects land formerly Sections 7, 8 & 9 SO 70137)



T 5/7

Land District: North Auckland

Digitally Generated Plan

Generated on: 15/08/2018 11:55am Page 8 of 10

Lots 902, 1001, 37 to 47, 213 to 215 and 155 to 163 Being a Subdivision of Lot 1000 DP 522519

Surveyor: Kendall Lisa Reid
Firm: Wood & Partners Consultants Ltd

Title Plan
LT 527534
DRAFT



Lots 1001, 213 - 215, 162 and 163 are subject to Part IVA Conservation Act 1987 (affects land formerly Sections 7, 8 & 9 SO 70137)

Land District: North Auckland

Digitally Generated Plan

Generated on: 15/08/2018 11:55am Page 9 of 10

Lots 902, 1001, 37 to 47, 213 to 215 and 155 to 163 Being a Subdivision of Lot 1000 DP 522519

Surveyor: Kendall Lisa Reid
Firm: Wood & Partners Consultants Ltd

Title Plan
LT 527534
DRAFT

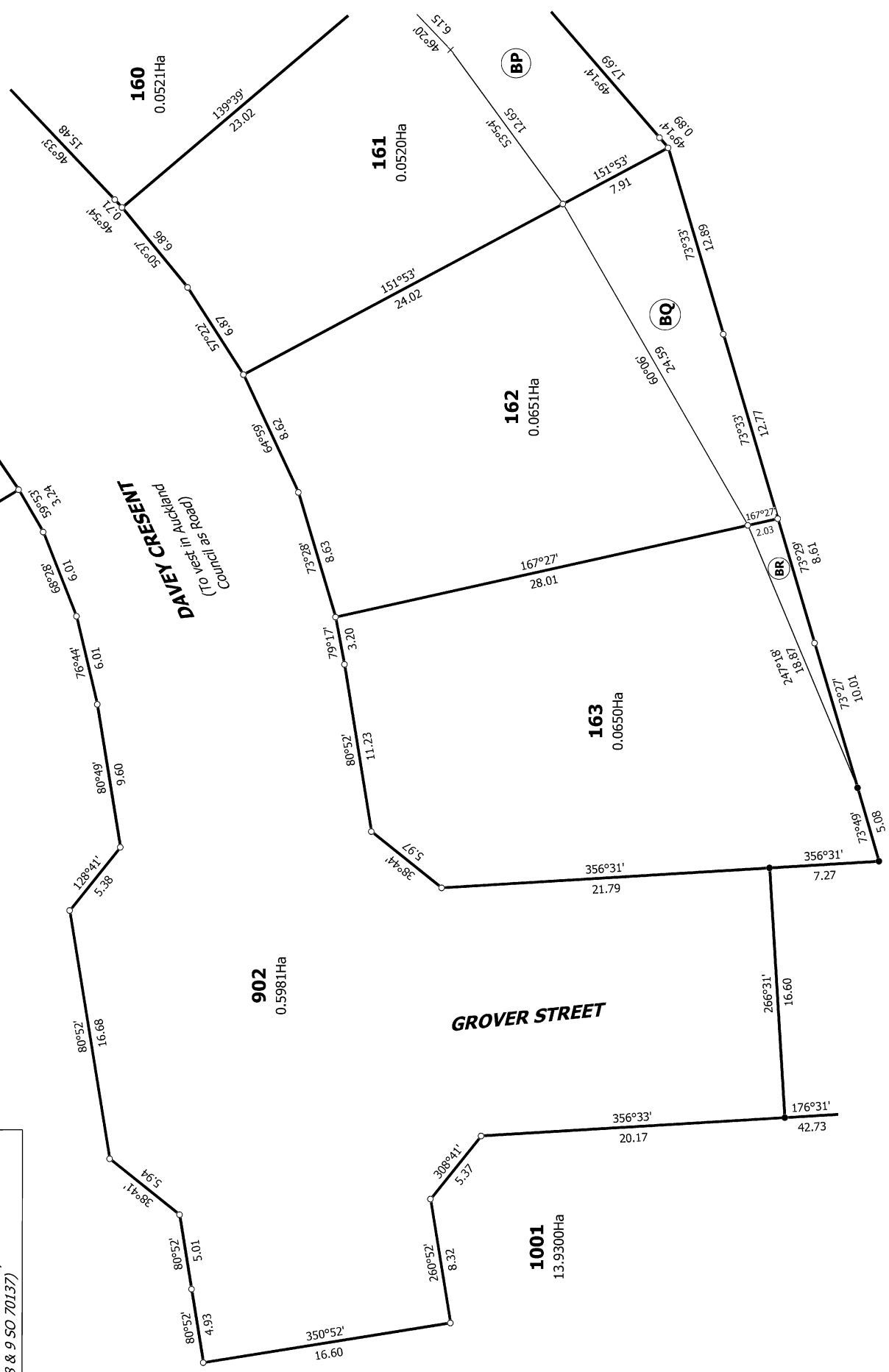
T 617



Lots 1001, 215, 162 and 163 are subject to Part IVA Conservation Act 1987 (affects land formerly Sections 7, 8 & 9 SO 70137)

Diag. ABB

215



T 7/7

Land District: North Auckland
 Digitally Generated Plan
 Generated on: 15/08/2018 11:55am Page 10 of 10

Lots 902, 1001, 37 to 47, 213 to 215 and 155 to 163 Being a Subdivision of Lot 1000 DP 522519

Surveyor: Kendall Lisa Reid
 Firm: Wood & Partners Consultants Ltd

Title Plan
 LT 527534
 DRAFT