



Title Plan - LT 509953

Survey Number LT 509953
Surveyor Reference 33219 P2 S4B
Surveyor Michael Rowan Hallam
Survey Firm Wood & Partners Consultants Ltd
Surveyor Declaration

Survey Details

Dataset Description Lots 446, 447, 489-519, 706, 912 & 2000 Being A Subdivision of Lot 2000 DP 507389
Status Initiated
Land District North Auckland
Submitted Date
Survey Class Class A
Survey Approval Date
Deposit Date

Territorial Authorities

Auckland Council

Comprised In

CT 784343

Created Parcels

Parcels	Parcel Intent	Area	CT Reference
Lot 446 Deposited Plan 509953	Fee Simple Title	0.0654 Ha	784980
Lot 447 Deposited Plan 509953	Fee Simple Title	0.0606 Ha	784981
Lot 489 Deposited Plan 509953	Fee Simple Title	0.0651 Ha	784982
Lot 490 Deposited Plan 509953	Fee Simple Title	0.0653 Ha	784983
Lot 491 Deposited Plan 509953	Fee Simple Title	0.0537 Ha	784984
Lot 492 Deposited Plan 509953	Fee Simple Title	0.0476 Ha	784985
Lot 493 Deposited Plan 509953	Fee Simple Title	0.0464 Ha	784986
Lot 494 Deposited Plan 509953	Fee Simple Title	0.0652 Ha	784987
Lot 495 Deposited Plan 509953	Fee Simple Title	0.0758 Ha	784988
Lot 496 Deposited Plan 509953	Fee Simple Title	0.0667 Ha	784989
Lot 497 Deposited Plan 509953	Fee Simple Title	0.0665 Ha	784990
Lot 498 Deposited Plan 509953	Fee Simple Title	0.0652 Ha	784991
Lot 706 Deposited Plan 509953	Fee Simple Title	0.0291 Ha	Multiple
Lot 499 Deposited Plan 509953	Fee Simple Title	0.0650 Ha	784993
Lot 500 Deposited Plan 509953	Fee Simple Title	0.0648 Ha	784994
Lot 501 Deposited Plan 509953	Fee Simple Title	0.0650 Ha	784995
Lot 502 Deposited Plan 509953	Fee Simple Title	0.0520 Ha	784996
Lot 503 Deposited Plan 509953	Fee Simple Title	0.0511 Ha	784997
Lot 504 Deposited Plan 509953	Fee Simple Title	0.0434 Ha	784998
Lot 505 Deposited Plan 509953	Fee Simple Title	0.0434 Ha	784999
Lot 506 Deposited Plan 509953	Fee Simple Title	0.0511 Ha	785000
Lot 507 Deposited Plan 509953	Fee Simple Title	0.0652 Ha	785001
Lot 508 Deposited Plan 509953	Fee Simple Title	0.0692 Ha	785002
Lot 509 Deposited Plan 509953	Fee Simple Title	0.0649 Ha	785003

Title Plan - LT 509953

Created Parcels

Parcels	Parcel Intent	Area	CT Reference
Lot 510 Deposited Plan 509953	Fee Simple Title	0.0649 Ha	785004
Lot 511 Deposited Plan 509953	Fee Simple Title	0.0507 Ha	785005
Lot 512 Deposited Plan 509953	Fee Simple Title	0.0506 Ha	785006
Lot 513 Deposited Plan 509953	Fee Simple Title	0.0508 Ha	785007
Lot 514 Deposited Plan 509953	Fee Simple Title	0.0514 Ha	785008
Lot 515 Deposited Plan 509953	Fee Simple Title	0.0525 Ha	785009
Lot 516 Deposited Plan 509953	Fee Simple Title	0.0548 Ha	785010
Lot 517 Deposited Plan 509953	Fee Simple Title	0.0652 Ha	785011
Lot 518 Deposited Plan 509953	Fee Simple Title	0.0654 Ha	785012
Lot 519 Deposited Plan 509953	Fee Simple Title	0.0651 Ha	785013
Lot 912 Deposited Plan 509953	Vesting on Deposit for Road	0.7884 Ha	
Lot 2000 Deposited Plan 509953	Fee Simple Title	7.2040 Ha	785302
Area A Deposited Plan 509953	Easement		
Area B Deposited Plan 509953	Land Covenant		
Area C Deposited Plan 509953	Land Covenant		
Area D Deposited Plan 509953	Land Covenant		
Area E Deposited Plan 509953	Land Covenant		
Area F Deposited Plan 509953	Land Covenant		
Area G Deposited Plan 509953	Land Covenant		
Area H Deposited Plan 509953	Land Covenant		
Area I Deposited Plan 509953	Land Covenant		
Area J Deposited Plan 509953	Land Covenant		
Area K Deposited Plan 509953	Easement		
Area L Deposited Plan 509953	Easement		
Area M Deposited Plan 509953	Easement		
Area N Deposited Plan 509953	Easement		
Area O Deposited Plan 509953	Easement		
Area P Deposited Plan 509953	Easement		
Area Q Deposited Plan 509953	Easement		
Area R Deposited Plan 509953	Easement		
Area S Deposited Plan 509953	Easement		
Area T Deposited Plan 509953	Land Covenant		
Area U Deposited Plan 509953	Land Covenant		
Area V Deposited Plan 509953	Land Covenant		
Area W Deposited Plan 509953	Land Covenant		
Area X Deposited Plan 509953	Land Covenant		
Area Y Deposited Plan 509953	Land Covenant		
Area Z Deposited Plan 509953	Land Covenant		
Area AA Deposited Plan 509953	Land Covenant		
Area AB Deposited Plan 509953	Land Covenant		
Area AC Deposited Plan 509953	Land Covenant		
Area AD Deposited Plan 509953	Land Covenant		
Area AE Deposited Plan 509953	Land Covenant		



Title Plan - LT 509953

Created Parcels

Parcels	Parcel Intent	Area	CT Reference
Area AF Deposited Plan 509953	Land Covenant		
Area AG Deposited Plan 509953	Land Covenant		
Area AH Deposited Plan 509953	Land Covenant		
Area AI Deposited Plan 509953	Land Covenant		
Area AJ Deposited Plan 509953	Land Covenant		
Area AK Deposited Plan 509953	Land Covenant		
Area AL Deposited Plan 509953	Land Covenant		
Area AM Deposited Plan 509953	Land Covenant		
Area BD Deposited Plan 509953	Easement		
Area BE Deposited Plan 509953	Easement		
Area BF Deposited Plan 509953	Easement		
Area BG Deposited Plan 509953	Easement		
Total Area		<hr/> 9.9715 Ha	

Lots 446, 447, 489-519, 706, 912 and 2000 Being a Subdivision of Lot 2000 DP 507389	
LAND REGISTRATION DISTRICT	NORTH AUCKLAND
PLAN NUMBER	DP 509953
TERRITORIAL AUTHORITY	AUCKLAND COUNCIL
TERRITORIAL AUTHORITY REF	SLC-62477C
DATE	MAY 2017
OUR REF	33219 Millwater P2 S4B

SCHEDULE OF PROPOSED EASEMENTS IN GROSS			
PURPOSE	SHOWN AS	SERVIENT TENEMENT	GRANTEE
RIGHT TO CONVEY ELECTRICITY	AREA A HEREON	LOT 706 HEREON	VECTOR LTD
RIGHT TO CONVEY GAS	AREA A HEREON	LOT 706 HEREON	VECTOR LTD
RIGHT TO CONVEY TELECOMMUNICATIONS AND COMPUTER MEDIA	AREA A HEREON	LOT 706 HEREON	CHORUS NEW ZEALAND LIMITED

SCHEDULE OF PROPOSED EASEMENTS			
PURPOSE	SHOWN AS	SERVIENT TENEMENT	DOMINANT TENEMENT
RIGHT TO MAINTAIN GARDEN	AREA K	LOT 516 HEREON	LOT 1019 DP 507389
	AREA L	LOT 516 HEREON	LOT 705 DP 507389
	AREA M	LOT 515 HEREON	LOT 705 DP 507389
	AREA N	LOT 514 HEREON	LOT 705 DP 507389
	AREA O	LOT 513 HEREON	LOT 705 DP 507389
	AREA P	LOT 512 HEREON	LOT 705 DP 507389
	AREA Q	LOT 511 HEREON	LOT 705 DP 507389
	AREA R	LOT 510 HEREON	LOT 705 DP 507389
	AREA S	LOT 510 HEREON	LOT 1017 DP 507389



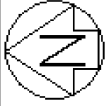
LAND COVENANTS

AREAS SHOWN AS AREA B – J HEREON ARE TO BE SUBJECT TO LAND COVENANTS.

AREAS SHOWN AS T - AM HEREON ARE TO BE SUBJECT TO LAND COVENANTS.

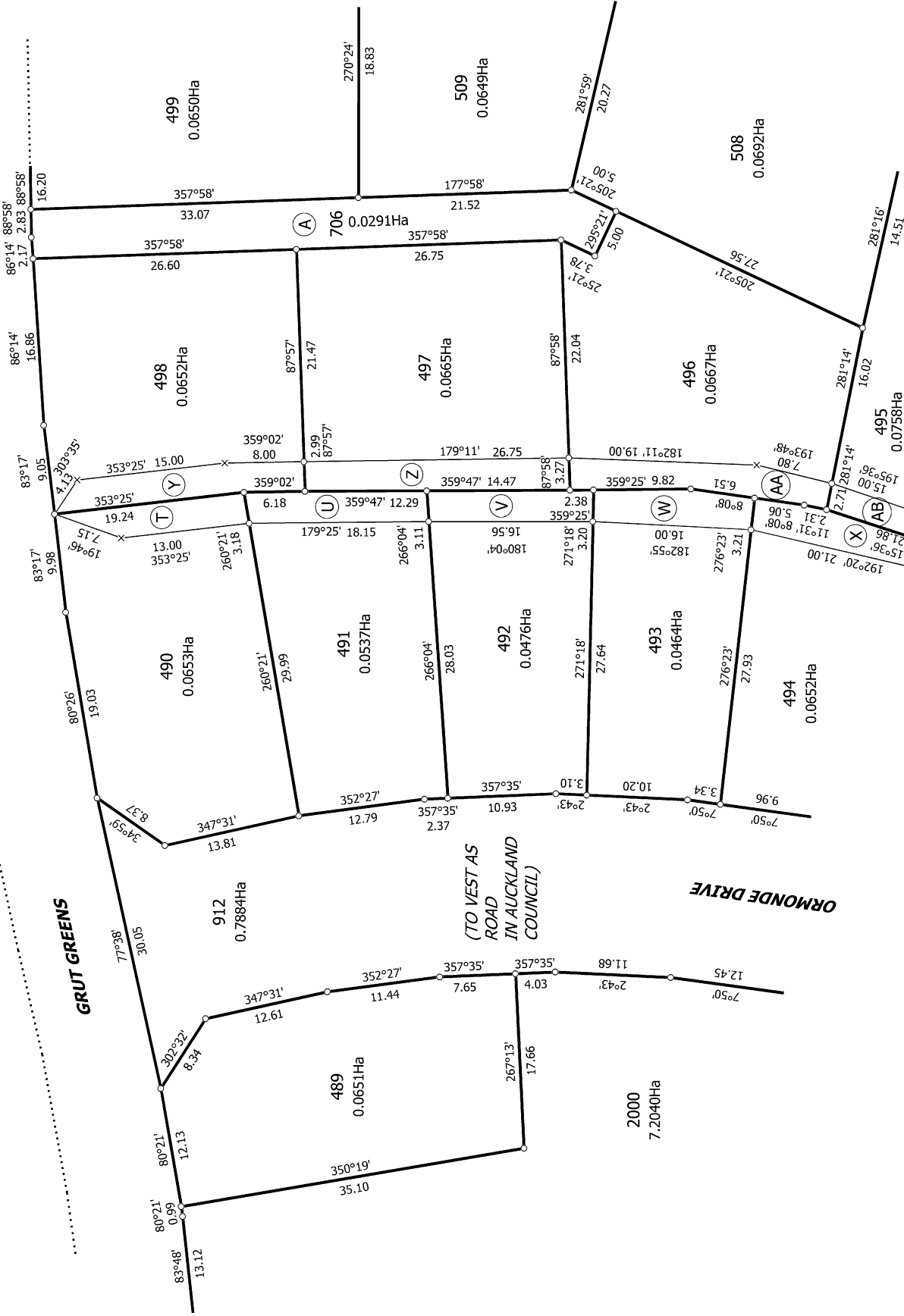
AMALGAMATION CONDITIONS

THAT LOT 706 HEREON (LEGAL ACCESS) BE HELD AS TO FOUR UNDIVIDED ONE-FOURTH SHARES BY THE OWNERS OF LOTS 496, 497, 508 & 509 HEREON AS TENANTS IN COMMON IN THE SAID SHARES AND THAT INDIVIDUAL COMPUTER REGISTERS BE ISSUED IN ACCORDANCE THEREWITH.



Diag. ADA

Lot 815 DP 474345



T 3/7

Land District: North Auckland

Digitally Generated Plan

Generated on: 22/05/2017 4:23pm Page 8 of 12

Lots 446, 447, 489-519, 706, 912 & 2000 Being A Subdivision of Lot 2000 DP 507389

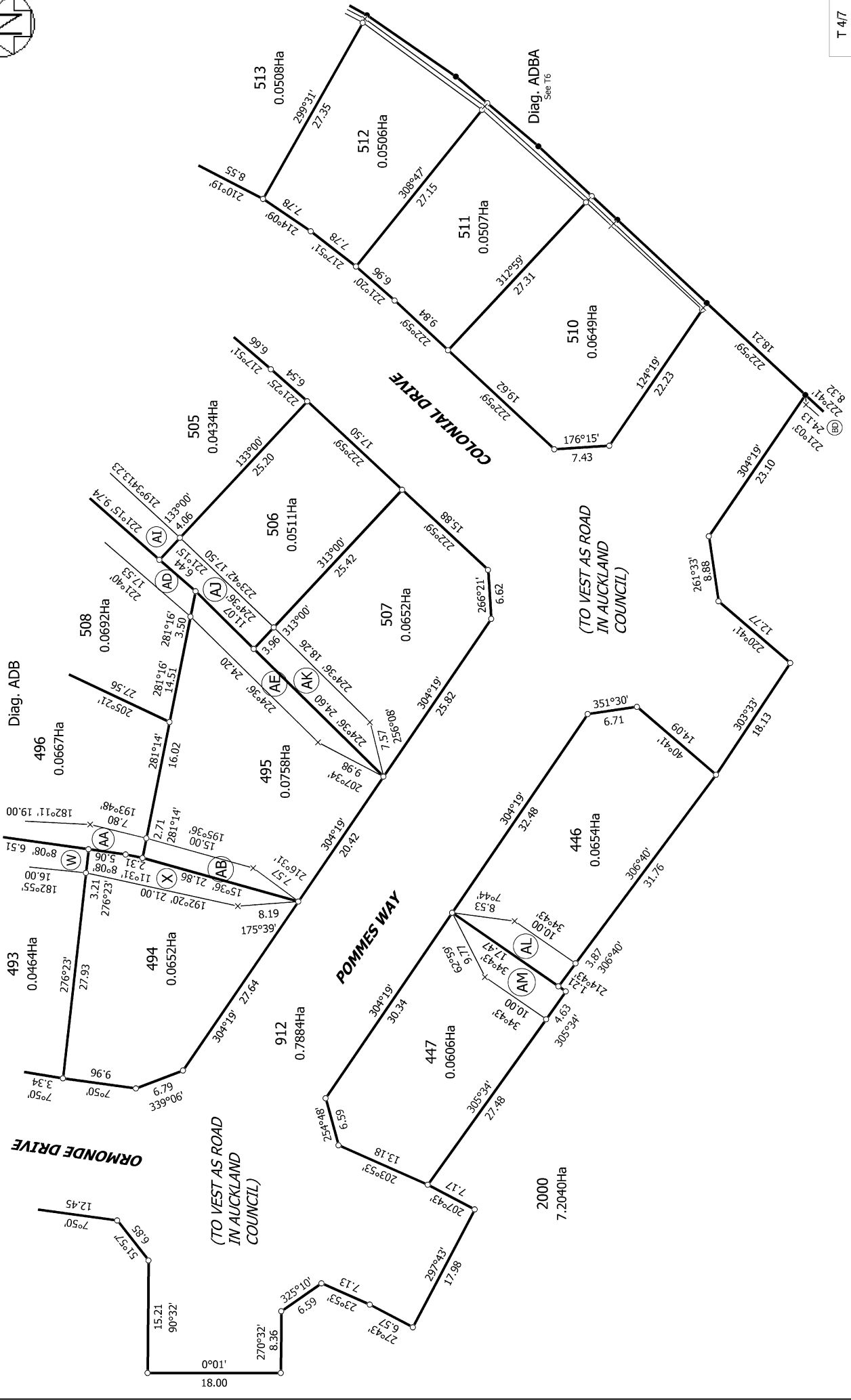
Surveyor: Michael Rowan Hallam

Firm: Wood & Partners Consultants Ltd

Title Plan

LT 509953

DRAFT

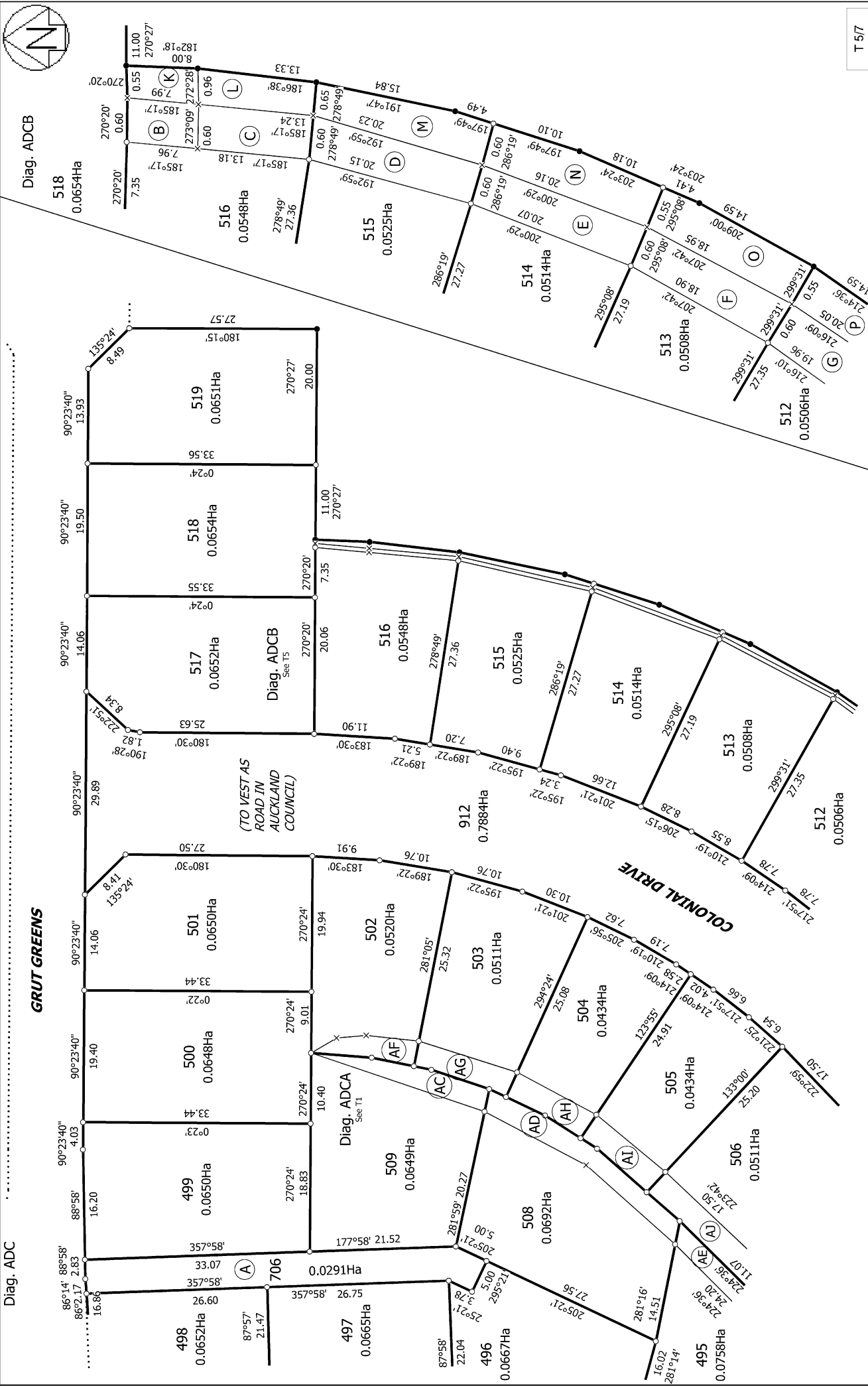


T 4/7

<p>Land District: North Auckland</p>	<p>Surveyor: Michael Rowan Hallam Firm: Wood & Partners Consultants Ltd</p>	<p>Title Plan LT 509953 DRAFT</p>
<p>Lots 446, 447, 489-519, 706, 912 & 2000 Being A Subdivision of Lot 2000 DP 507389</p> <p>Digitally Generated Plan Generated on: 22/05/2017 4:23pm Page 9 of 12</p>		

Diag. ADC

GRUT GREENS



T 5/7

Land District: North Auckland

Digitally Generated Plan

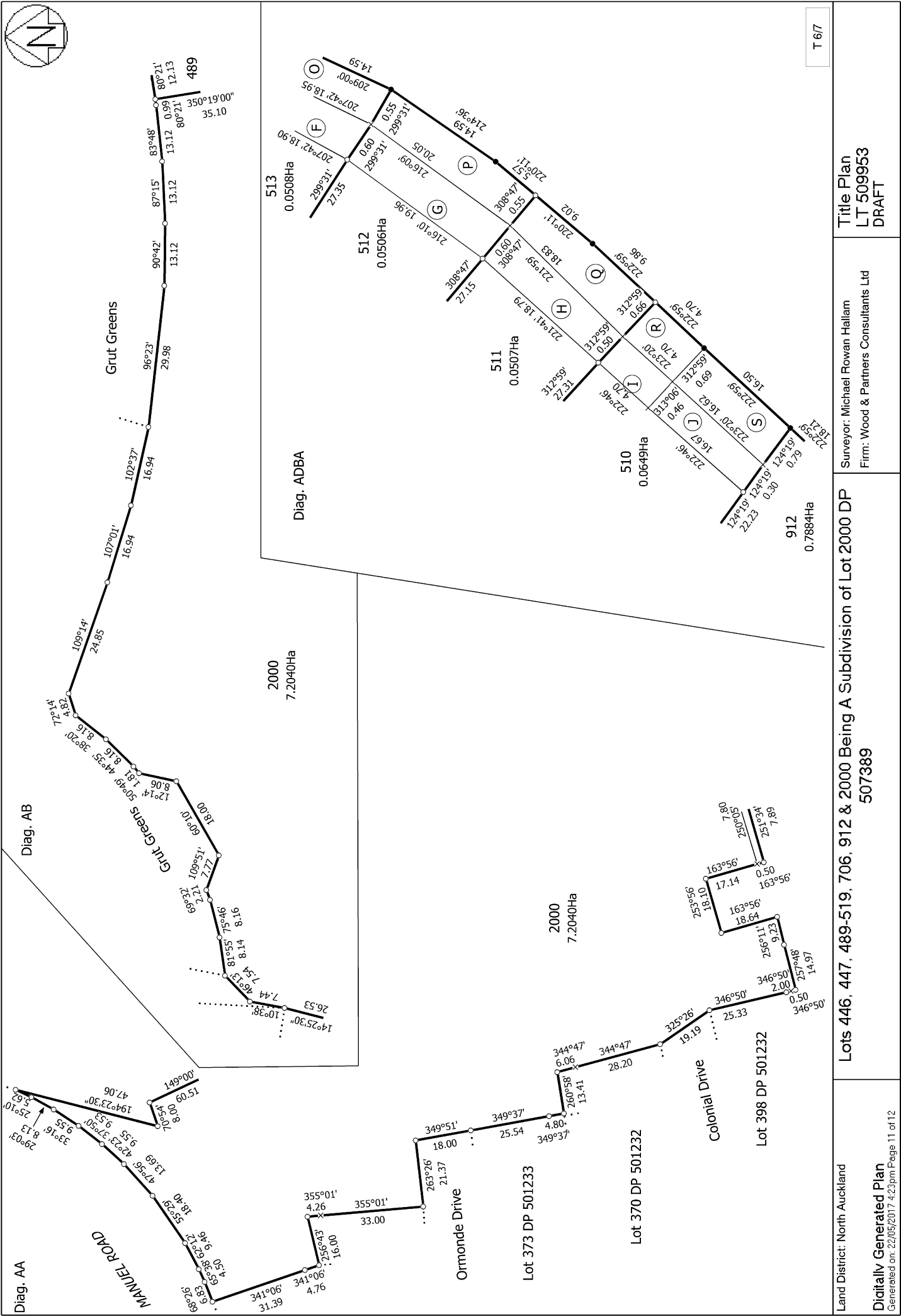
Generated on: 22/05/2017 4:23pm Page 10 of 12

Lots 446, 447, 489-519, 706, 912 & 2000 Being A Subdivision of Lot 2000 DP 507389

Surveyor: Michael Rowan Hallam
Firm: Wood & Partners Consultants Ltd

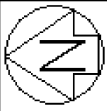
Title Plan
LT 509953

DRAFT

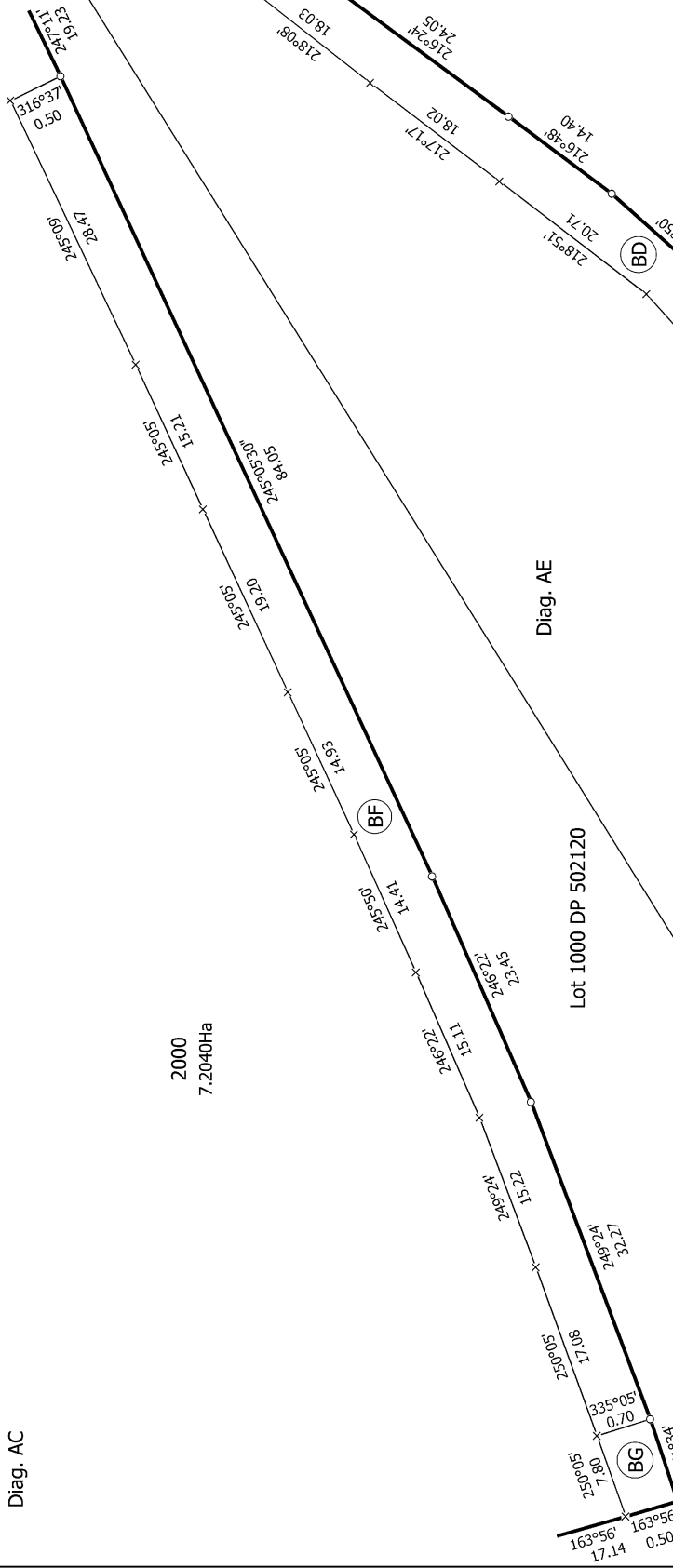


T 6/7

<p>Land District: North Auckland</p> <p>Digitally Generated Plan</p> <p>Generated on: 22/05/2017 4:23pm Page 11 of 12</p>	<p>Lots 446, 447, 489-519, 706, 912 & 2000 Being A Subdivision of Lot 2000 DP 507389</p>	<p>Surveyor: Michael Rowan Hallam</p> <p>Firm: Wood & Partners Consultants Ltd</p>	<p>Title Plan</p> <p>LT 509953</p> <p>DRAFT</p>
--	---	--	--

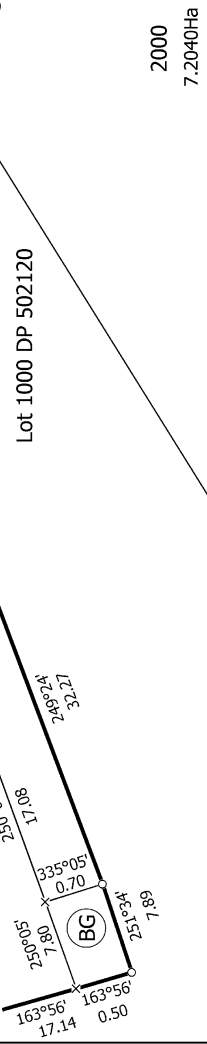


Diag. AC



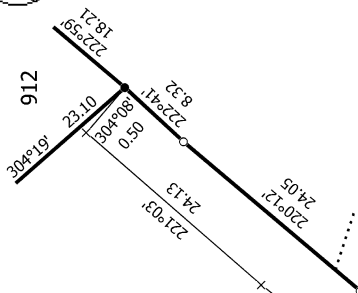
2000
7.2040Ha

Diag. AE



2000
7.2040Ha

Lot 1000 DP 483316



T 717

Land District: North Auckland

Digitally Generated Plan

Generated on: 22/05/2017 4:23pm Page 12 of 12

Lots 446, 447, 489-519, 706, 912 & 2000 Being A Subdivision of Lot 2000 DP 507389

Surveyor: Michael Rowan Hallam
Firm: Wood & Partners Consultants Ltd

Title Plan
LT 509953
DRAFT