



# Title Plan - LT 509954

---

**Survey Number** LT 509954  
**Surveyor Reference** 37001 S2B  
**Surveyor** Jamie Alistair Whyte  
**Survey Firm** Wood & Partners Consultants Ltd  
**Surveyor Declaration** I Jamie Alistair Whyte, being a licensed cadastral surveyor, certify that:  
(a) this dataset provided by me and its related survey are accurate, correct and in accordance with the Cadastral Survey Act 2002 and the Rules for Cadastral Survey 2010, and  
(b) the survey was undertaken by me or under my personal direction.  
Declared on 21 Jun 2017 03:22 PM

---

## Survey Details

**Dataset Description** Lots 101 - 119 and 1003 Being A Subdivision of Lot 1002 DP 505169  
**Status** Approved as to Survey  
**Land District** North Auckland  
**Submitted Date** 21/06/2017  
**Survey Class** Class A  
**Survey Approval Date** 06/07/2017  
**Deposit Date**

---

## Territorial Authorities

Auckland Council

---

## Comprised In

CT 763254

---

## Created Parcels

Parcels	Parcel Intent	Area	CT Reference
Area CK Deposited Plan 509954	Land Covenant		
Area CL Deposited Plan 509954	Land Covenant		
Area CM Deposited Plan 509954	Land Covenant		
Area CN Deposited Plan 509954	Land Covenant		
Area CO Deposited Plan 509954	Land Covenant		
Area CP Deposited Plan 509954	Land Covenant		
Area CQ Deposited Plan 509954	Land Covenant		
Area BY Deposited Plan 509954	Land Covenant		
Area A Deposited Plan 509954	Easement		
Lot 101 Deposited Plan 509954	Fee Simple Title	0.0650 Ha	785028
Lot 102 Deposited Plan 509954	Fee Simple Title	0.0650 Ha	785029
Lot 103 Deposited Plan 509954	Fee Simple Title	0.0520 Ha	785030
Lot 104 Deposited Plan 509954	Fee Simple Title	0.0520 Ha	785031
Lot 105 Deposited Plan 509954	Fee Simple Title	0.0520 Ha	785032
Lot 106 Deposited Plan 509954	Fee Simple Title	0.0520 Ha	785033
Lot 107 Deposited Plan 509954	Fee Simple Title	0.0522 Ha	785034
Lot 108 Deposited Plan 509954	Fee Simple Title	0.0652 Ha	785035
Lot 109 Deposited Plan 509954	Fee Simple Title	0.0651 Ha	785036
Lot 110 Deposited Plan 509954	Fee Simple Title	0.0521 Ha	785037
Lot 111 Deposited Plan 509954	Fee Simple Title	0.0520 Ha	785038



# Title Plan - LT 509954

---

## Created Parcels

Parcels	Parcel Intent	Area	CT Reference
Lot 112 Deposited Plan 509954	Fee Simple Title	0.0520 Ha	785039
Lot 113 Deposited Plan 509954	Fee Simple Title	0.0520 Ha	785040
Lot 114 Deposited Plan 509954	Fee Simple Title	0.0520 Ha	785041
Lot 115 Deposited Plan 509954	Fee Simple Title	0.0521 Ha	785042
Lot 116 Deposited Plan 509954	Fee Simple Title	0.0650 Ha	785043
Lot 117 Deposited Plan 509954	Fee Simple Title	0.0650 Ha	785044
Lot 118 Deposited Plan 509954	Fee Simple Title	0.0650 Ha	785045
Lot 119 Deposited Plan 509954	Fee Simple Title	0.0650 Ha	785046
Area BZ Deposited Plan 509954	Land Covenant		
Area CA Deposited Plan 509954	Land Covenant		
Area CB Deposited Plan 509954	Land Covenant		
Area CC Deposited Plan 509954	Land Covenant		
Area CD Deposited Plan 509954	Land Covenant		
Area CE Deposited Plan 509954	Land Covenant		
Area CF Deposited Plan 509954	Land Covenant		
Area CG Deposited Plan 509954	Land Covenant		
Area CH Deposited Plan 509954	Land Covenant		
Area CI Deposited Plan 509954	Land Covenant		
Area CJ Deposited Plan 509954	Land Covenant		
Lot 1003 Deposited Plan 509954	Fee Simple Title	12.6864 Ha	785047
<b>Total Area</b>		<u>13.7791 Ha</u>	

# Schedule / Memorandum

www.woods.co.nz



Lots 101 - 119 and 1003 being a Subdivision of Lot 1002 DP 505169	
LAND REGISTRATION DISTRICT	NORTH AUCKLAND
PLAN NUMBER	DP 509954
TERRITORIAL AUTHORITY	AUCKLAND COUNCIL
TERRITORIAL AUTHORITY REF	SLC-62000, REG-62001, REG-62002
DATE	May 2017
OUR REF	37001 Arran Hill P 7 Stage 2B

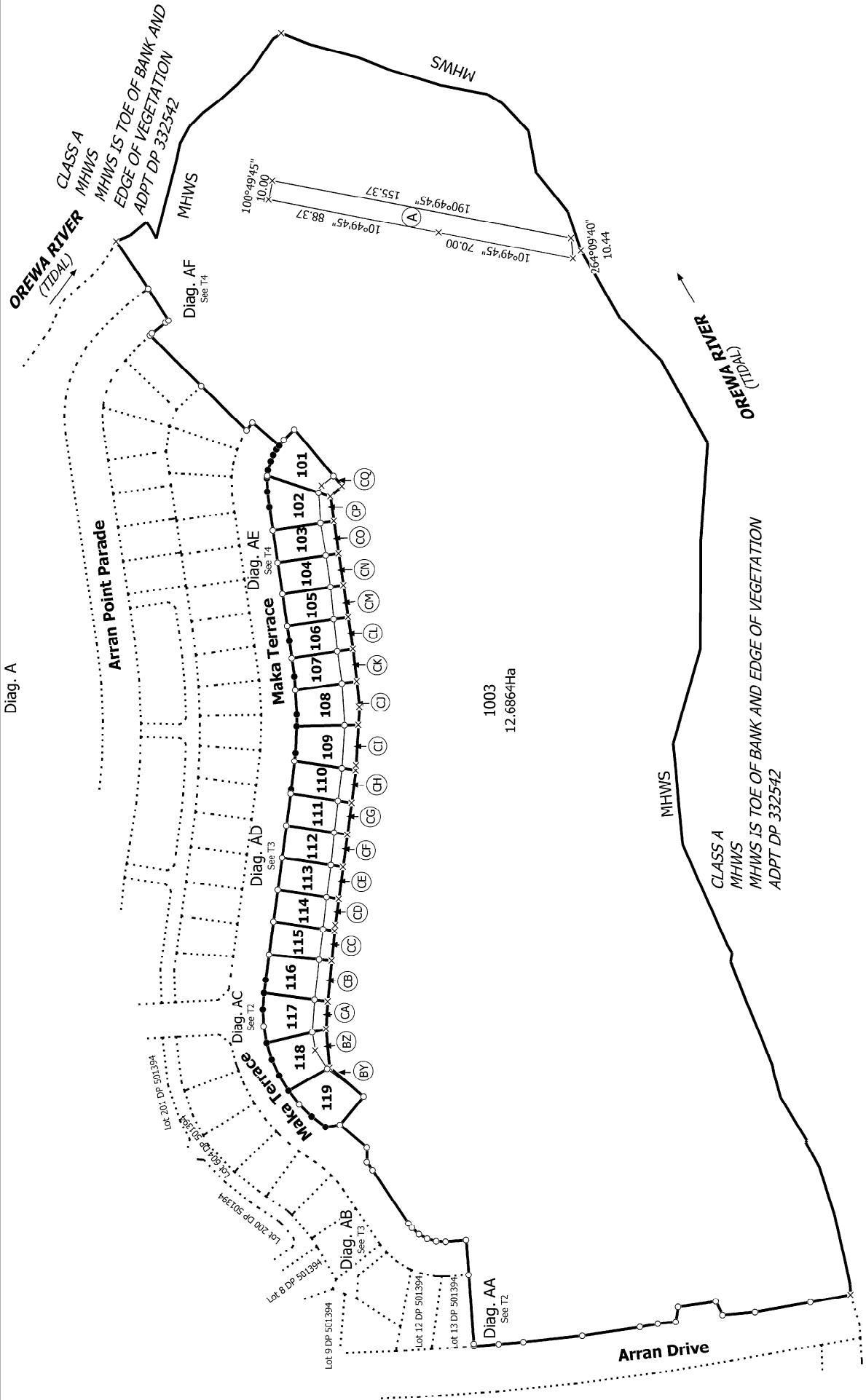
SCHEDULE OF EXISTING EASEMENT IN GROSS TO BE RETAINED					
PURPOSE	PREVIOUSLY SHOWN AS	NOW SHOWN AS	SERVIENT TENEMENT	GRANTEE	CREATED BY
ELECTRICITY	MARKED AA DP 505169	AREA A	LOT 1003 HEREON	WAITEMATA ELECTRICITY POWER BOARD	C442974.1

## LAND COVENANTS

AREAS SHOWN AS AREAS BY, BZ, CA, CB, CC, CD, CE, CF, CG, CH, CI, CJ, CK, CL, CM, CN, CO, CP & CQ HEREON ARE TO BE SUBJECT TO LAND COVENANTS.



Diag. A



T 1/4

Land District: North Auckland

**Digitally Generated Plan**  
Generated on: 09/07/2017 2:03pm Page 4 of 7

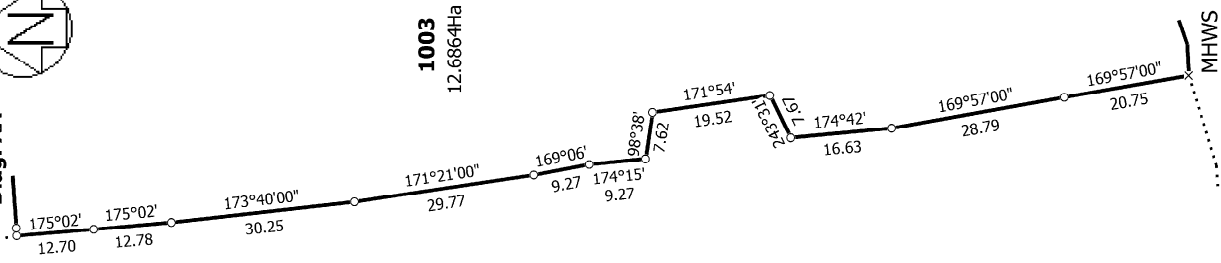
Lots 101 - 119 and 1003 Being A Subdivision of Lot 1002 DP 505169

Surveyor: Jamie Alistair Whyte  
Firm: Wood & Partners Consultants Ltd

Title Plan  
LT 509954  
Approved on: 6/07/2017



Diag. AA



Arran Drive

1003  
12.6864Ha

T 2/4

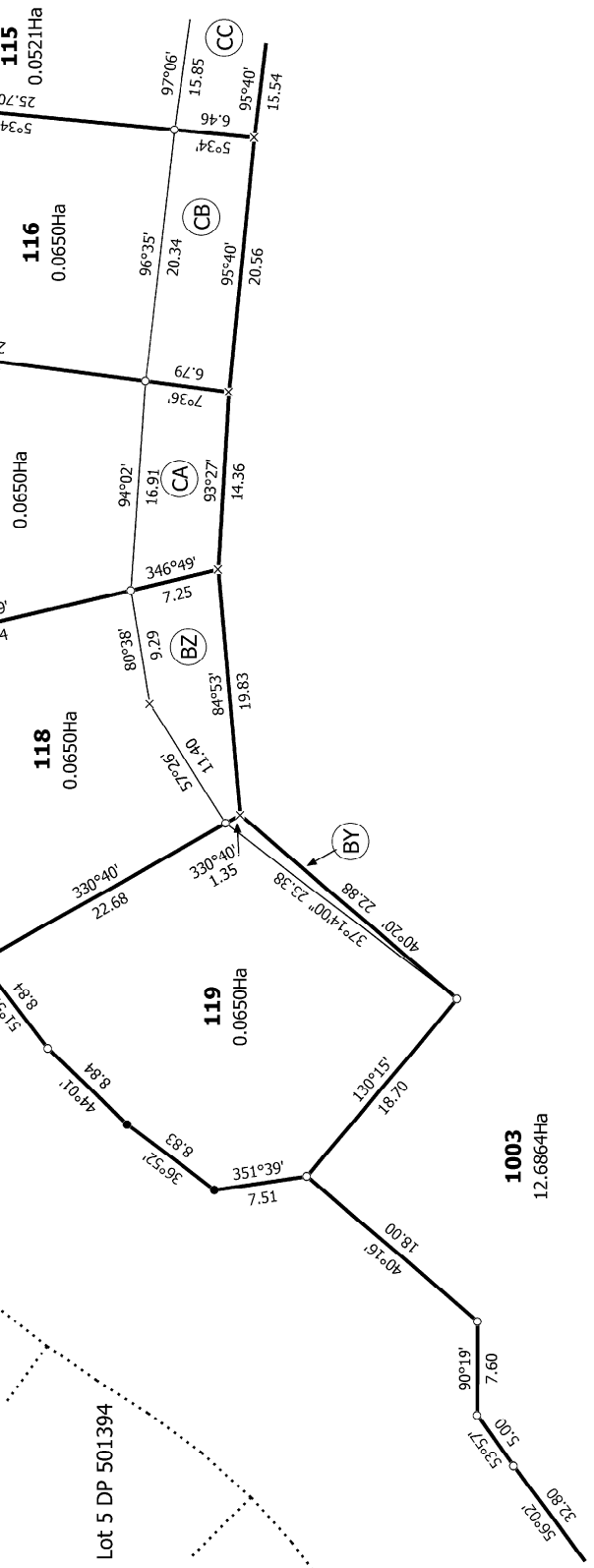
Title Plan  
LT 509954  
Approved on: 6/07/2017

Diag. AC



Maka Terrace

Maka Terrace

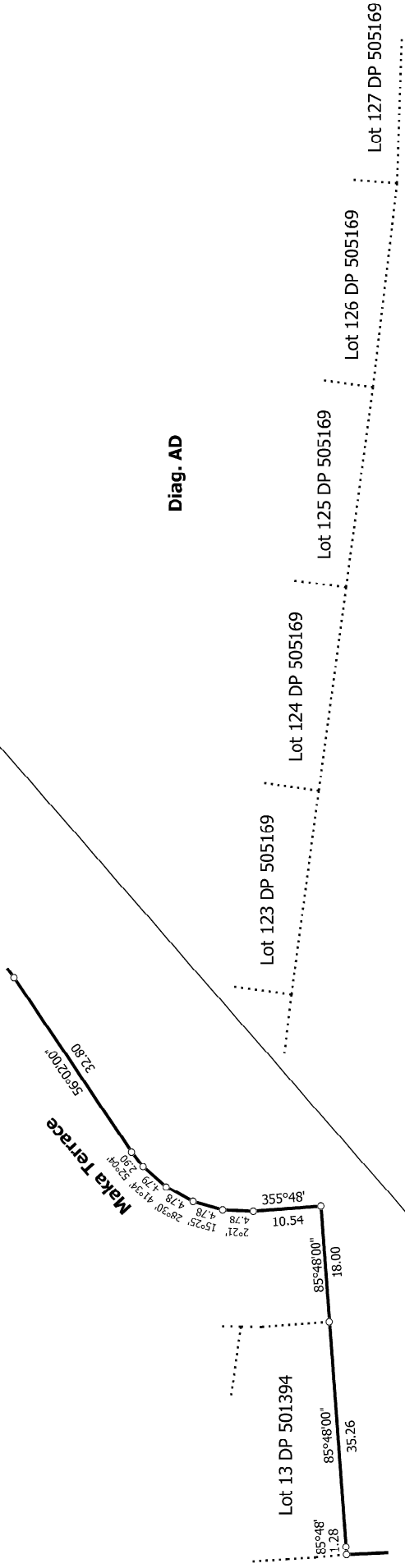


Surveyor: Jamie Alistair Whyte  
Firm: Wood & Partners Consultants Ltd

Lots 101 - 119 and 1003 Being A Subdivision of Lot 1002 DP 505169

Diag. AB

Diag. AD



**1003**  
12.6864Ha

**Maka Terrace**

**115**  
0.0521Ha

**114**  
0.0520Ha

**113**  
0.0520Ha

**112**  
0.0520Ha

**111**  
0.0520Ha

**110**  
0.0521Ha

**109**  
0.0651Ha

**108**  
0.0652Ha

**1003**  
12.6864Ha

T 3/4

Land District: North Auckland

Digitally Generated Plan

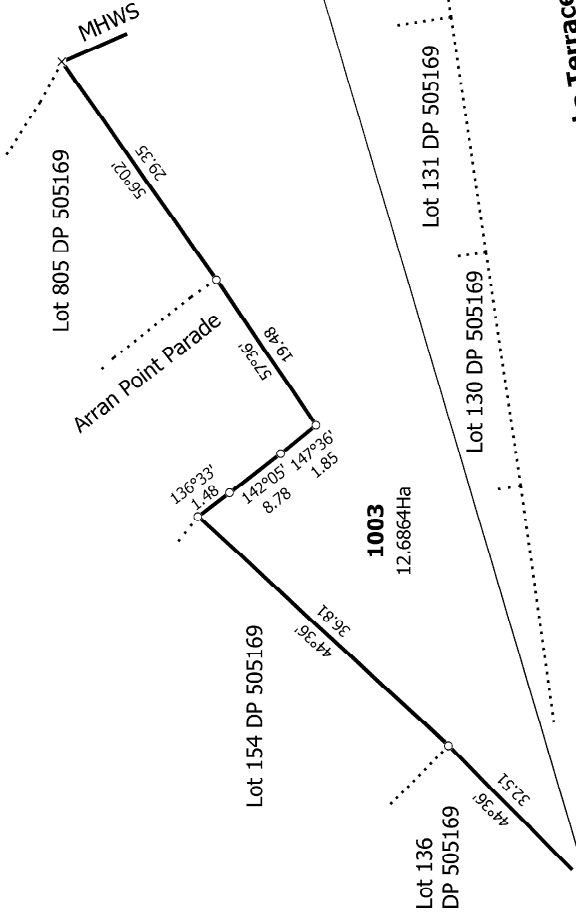
Generated on: 09/07/2017 2:03pm Page 6 of 7

Lots 101 - 119 and 1003 Being A Subdivision of Lot 1002 DP 505169

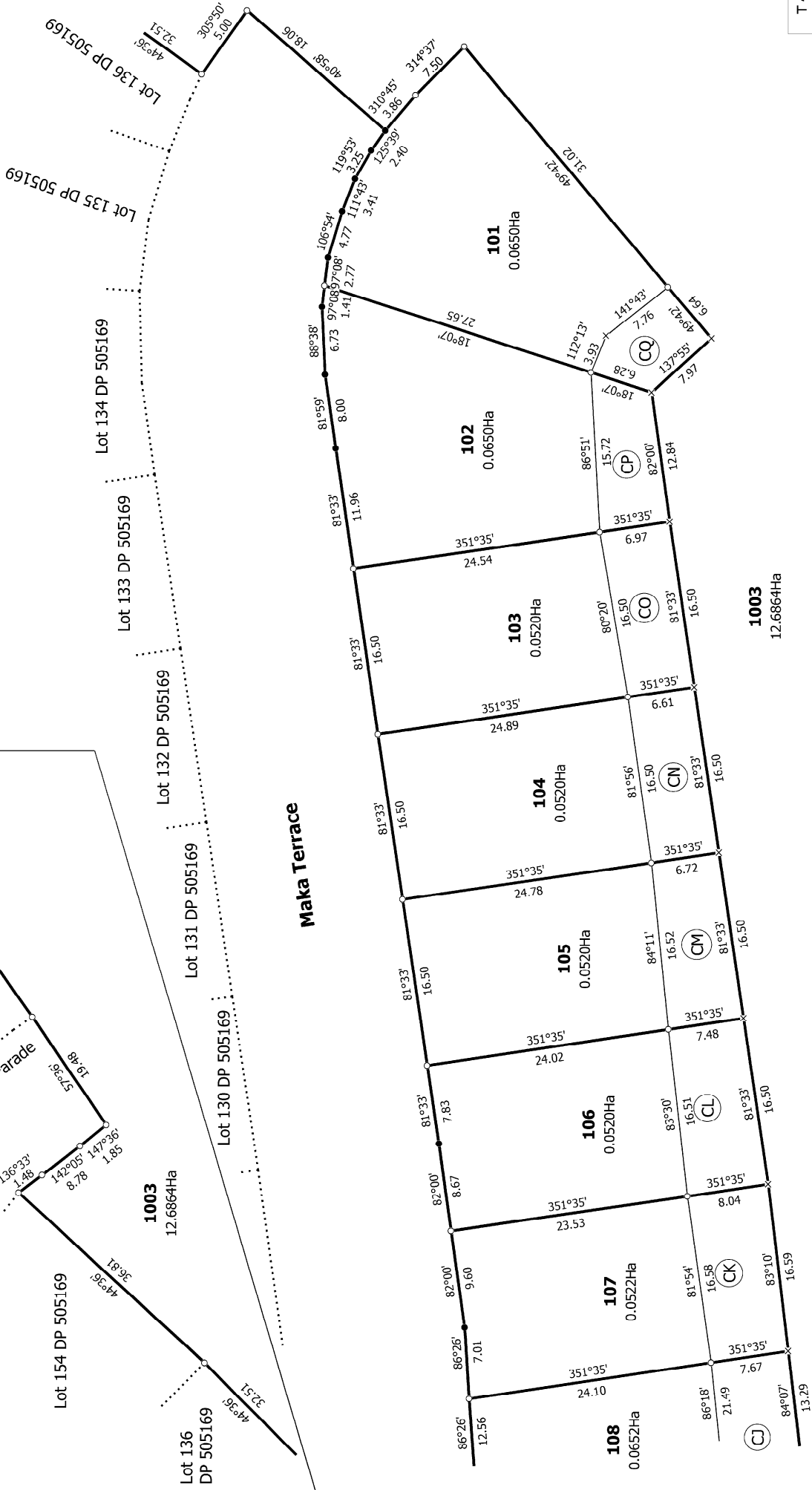
Surveyor: Jamie Alistair Whyte  
Firm: Wood & Partners Consultants Ltd

Title Plan  
LT 509954  
Approved on: 6/07/2017

**Diag. AF**



**Diag. AE**



T 4/4

Land District: North Auckland

**Digitally Generated Plan**  
Generated on: 09/07/2017 2:03pm Page 7 of 7

**Lots 101 - 119 and 1003 Being A Subdivision of Lot 1002 DP 505169**

Surveyor: Jamie Alistair Whyte  
Firm: Wood & Partners Consultants Ltd

**Title Plan**  
LT 509954  
Approved on: 6/07/2017